

MFA 01 set

Micro Probes 1 MHz up to 6 GHz



Short description

The MFA 01 set includes high-resolution near-field micro probes used to measure magnetic fields up to 6 GHz, e.g. at signal conductors (150 µm), SMD components (0603-0201), or IC pins. Each hand-guided MFA near-field micro probe has an integrated preamplifier.

The amplifier stage (9 V, 100 mA) is powered via the bias tee BT 706, which has an impedance of 50 Ohm. The near-field micro probes are connected via the BT 706 to a spectrum analyzer or an oscilloscope.

Langer EMV-Technik GmbH includes correction lines in the delivery. With the help of the correction lines the probe's output voltage is converted into either the respective magnetic field or the current running through the conductor.

Scope of delivery

- 1x MFA-R 0.2-6, Near-Field Micro Probe 100 MHz up to 6 GHz
- 1x MFA-K 0.1-12, Near-Field Micro Probe 100 MHz up to 6 GHz
- 1x MFA-R 0.2-75, Near-Field Micro Probe 1 MHz up to 1 GHz
- 1x BT 706, Bias Tee for Langer probes
- 1x SMA-SMA 1 m, SMA-SMA Measuring Cable
- 1x NT FRI EU, Power Supply Unit
- 1x MFA case, System Case Near-Field Probes
- 1x MFA acc, Accessories

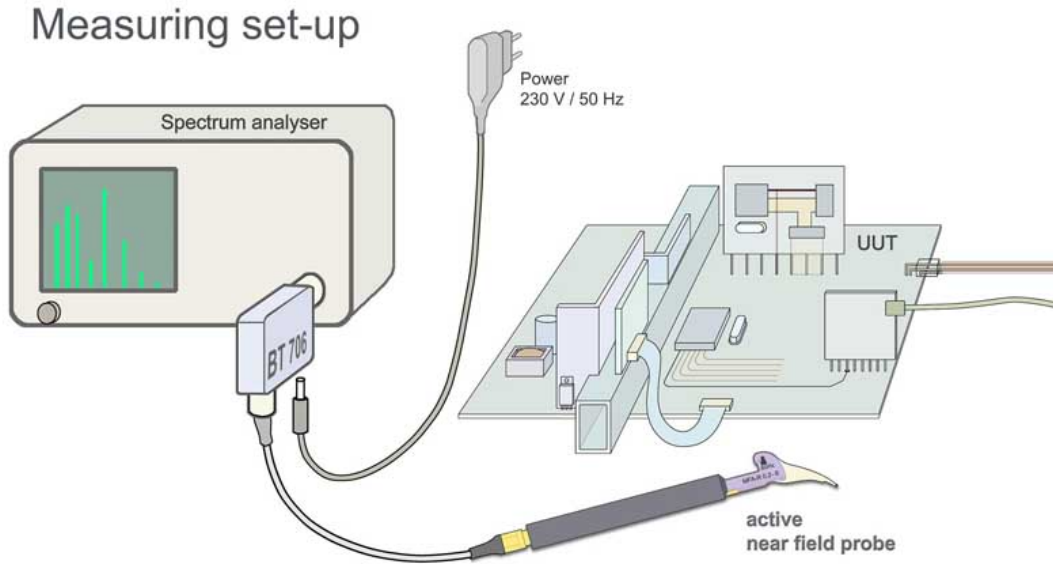
Technical parameters

Frequency range	1 MHz ... 6 GHz
Resolution	200 µm

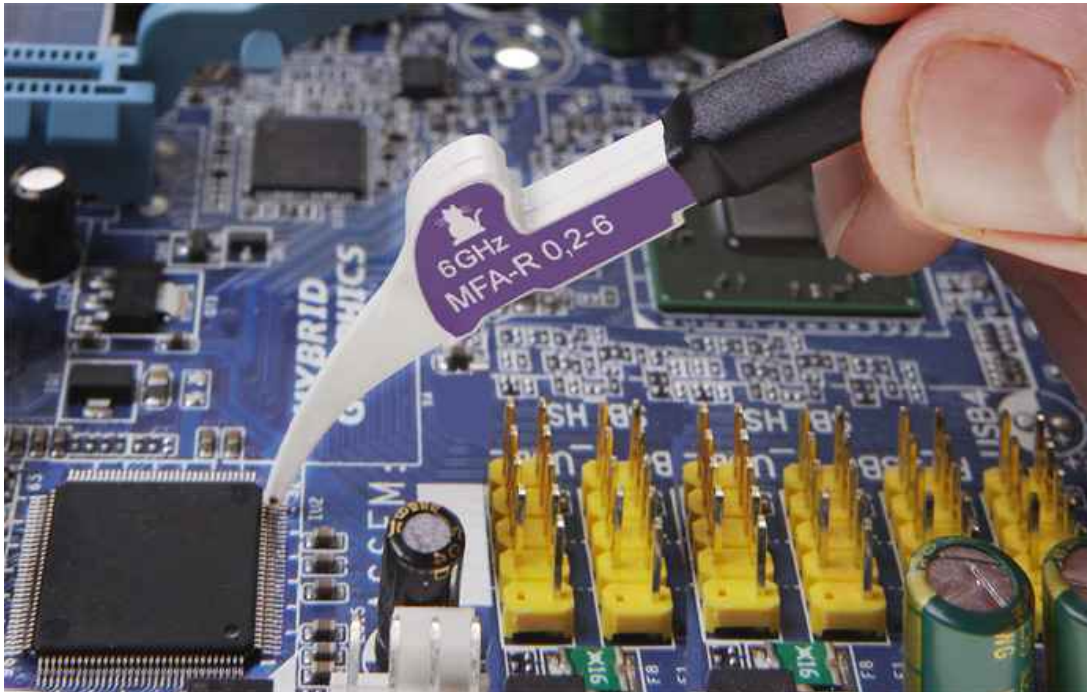
MFA 01 set

Micro Probes 1 MHz up to 6 GHz

Measurement set up with Bias tee BT 706



MFA-R 0.2-6 Application



MFA 01 set

Micro Probes 1 MHz up to 6 GHz

Scope of delivery Set MFA 01



Micro probe MFA-R 0.2-6 with Bias-Tee BT 706

