



AI Workplace Occupancy Sensor

Featuring LoRaWAN[®]

VS121

User Guide



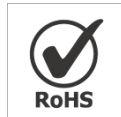
Safety Precautions

Milesight will not shoulder responsibility for any loss or damage resulting from not following the instructions of this operating guide.

- ❖ The device must not be disassembled or remodeled in any way.
- ❖ To avoid risk of fire and electric shock, do keep the product away from rain and moisture before installation.
- ❖ Do not place the device where the temperature is below/above the operating range.
- ❖ Do not touch components which may be hot.
- ❖ The device must never be subjected to shocks or impacts.
- ❖ Make sure the device is firmly fixed when installing.
- ❖ Make sure the plug is firmly inserted into the power socket.
- ❖ Do not expose the device to where a laser beam equipment is used.
- ❖ Use a soft, dry cloth to clean the lens of the device. Stubborn stains can be removed using a cloth dampened with a small quantity of detergent solution, then wipe them dry.

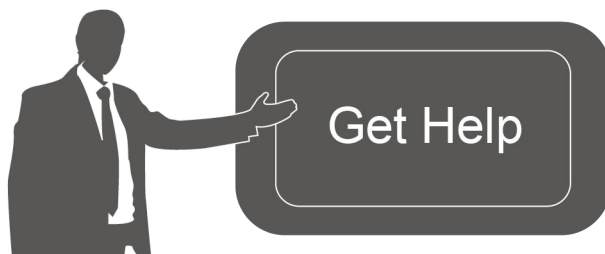
Declaration of Conformity

VS121 is in conformity with the essential requirements and other relevant provisions of the CE, FCC, and RoHS.



Copyright © 2011-2023 Milesight. All rights reserved.

All information in this guide is protected by copyright law. Whereby, no organization or individual shall copy or reproduce the whole or part of this user guide by any means without written authorization from Xiamen Milesight IoT Co., Ltd.



For assistance, please contact

Milesight technical support:

Email: iot.support@milesight.com

Support Portal: support.milesight-iot.com

Tel: 86-592-5085280

Fax: 86-592-5023065

Address: Building C09, Software Park
Phase III, Xiamen 361024,
China

Revision History

Date	Doc Version	Description
Apr. 26, 2021	V 1.0	Initial version
Jan. 18, 2022	V 1.1	<ol style="list-style-type: none">1. Support line crossing counting feature;2. Support D2D feature;3. Support people counting debounce;4. Support uploading max number of people;5. Support downlink control.
Apr. 8, 2022	V 1.2	<ol style="list-style-type: none">1. Milesight LOGO update;2. Support recognition scheme selection.
June 20, 2022	V 1.3	<ol style="list-style-type: none">1. Update web GUI menu;2. Support customize people counting detection area to 16 regions;3. Add recommended installation guide and line drawing note.
Dec. 14, 2022	V 1.4	<ol style="list-style-type: none">1. Support per region people counting uplinks2. Add private mask feature3. Add LoRaWAN single channel mode4. Add Wi-Fi SSID broadcast option5. Delete Auto Reboot, the LoRaWAN V1.1.0 option6. Support live view blur process and delete Image Config
Mar. 9, 2023	V1.5	<ol style="list-style-type: none">1. Add privacy mode under activation page2. Support filter U-turns feature

Contents

1. Product Introduction	5
1.1 Overview	5
1.2 Key Features	5
2. Hardware Introduction	5
2.1 Packing List	5
2.2 Hardware Overview	6
2.3 Buttons and LED Indicators	6
2.4 Dimensions (mm)	6
3. Access the Sensor	7
3.1 Access without Plugin	7
3.2 Access with Plugin	8
4. Operation Guide	10
4.1 Live Video	10
4.2 IoT-People Counting	11
4.2.1 Region People Counting	11
4.2.2 Line Crossing Counting	12
4.2.3 Recognition Scheme	13
4.2.4 Privacy Mask	14
4.3 IoT-Communication	15
4.3.1 LoRaWAN	15
4.3.2 Milesight D2D	17
4.3.3 Wi-Fi	17
4.4 System	19
5. Mount the Sensor	22
5.1 Recommended Height for Certain Object	22
5.2 Illuminance Requirements for AI Analysis	23
5.3 Recommended Installation for Line Crossing Counting	23
5.4 Factors Affecting Accuracy	24
5.5 Ceiling Installation	24
6. Device Payload	25
6.1 Uplink Data	25
6.2 Downlink Command	27

1. Product Introduction

1.1 Overview

VS121, based on Artificial Intelligence (AI) technology, is an AI workplace sensor designed to monitor occupancy & utilization in modern workspace, which can reach up to 98% recognition rate. Only counter values are transmitted over LoRaWAN® network to prevent privacy concerns. VS121 to prevent the privacy concerns. VS121 is equipped with Wi-Fi for easy configuration without any tools.

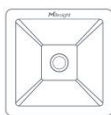
Sensor data are transmitted in real-time using standard LoRaWAN® protocol. LoRaWAN® enables encrypted radio transmissions over long distance while consuming very little power. The user can obtain sensor data and view the trend of data change through the user's own network server.

1.2 Key Features

- Recognition rate is up to 98% based on advanced AI identification and analysis technology and wide detection range
- Support to map up to 16 custom regions
- No image data is collected, free from privacy concerns
- Equipped with Wi-Fi for web GUI configuration
- Function well with standard LoRaWAN® gateways and network servers

2. Hardware Introduction

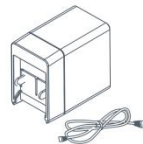
2.1 Packing List



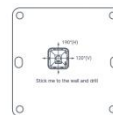
1 × VS121 Device



4 × Wall Mounting
Kits



1 ×
Type-C Cable (1 m) &
Power Adapter



1 ×
Mounting Sticker



1 x

Warranty Card

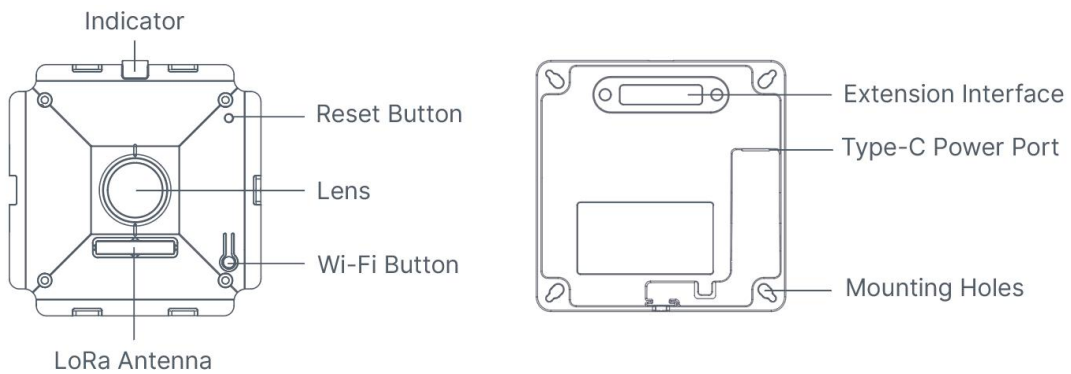


1 x

Quick Guide

! If any of the above items is missing or damaged, please contact your sales representative.

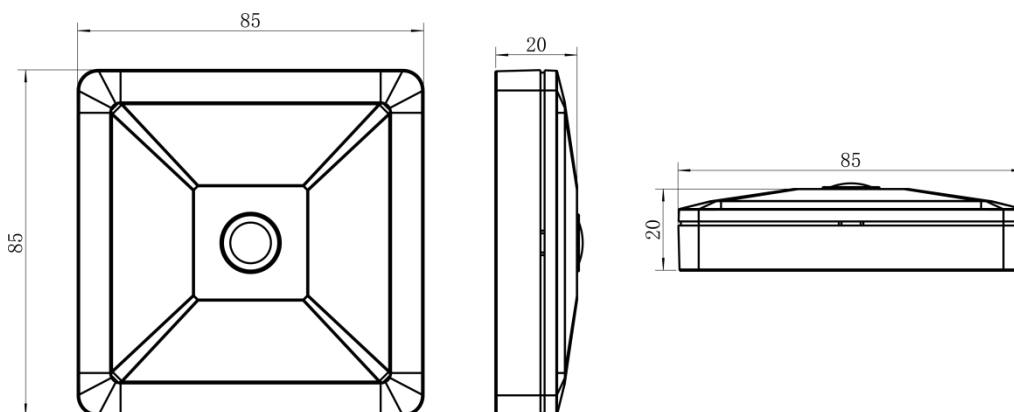
2.2 Hardware Overview



2.3 Buttons and LED Indicators

Function	Action	LED Indication
Turn On/Off Wi-Fi	Press and hold the Wi-Fi button for more than 3 seconds.	Off → On
	Press and hold the Wi-Fi button for more than 3 seconds.	On → Off
Reset to Factory Default	Press and hold the reset button for more than 10 seconds.	Blinks 6 times.

2.4 Dimensions (mm)



3. Access the Sensor

VS121 sensor provides user-friendly web GUI for configuration and users can access it via Wi-Fi connection. The recommended browsers are Internet Explorer, Firefox, Chrome, Microsoft Edge, Safari. The default IP of sensor is 192.168.1.1, and default SSID is Workplace Sensor_XXXXXX (can be found on the label).

3.1 Access without Plugin

Step 1: Power on the device.

Step 2: Enable the Wireless Network Connection on your computer and search for corresponding access point, then connect computer to this access point.

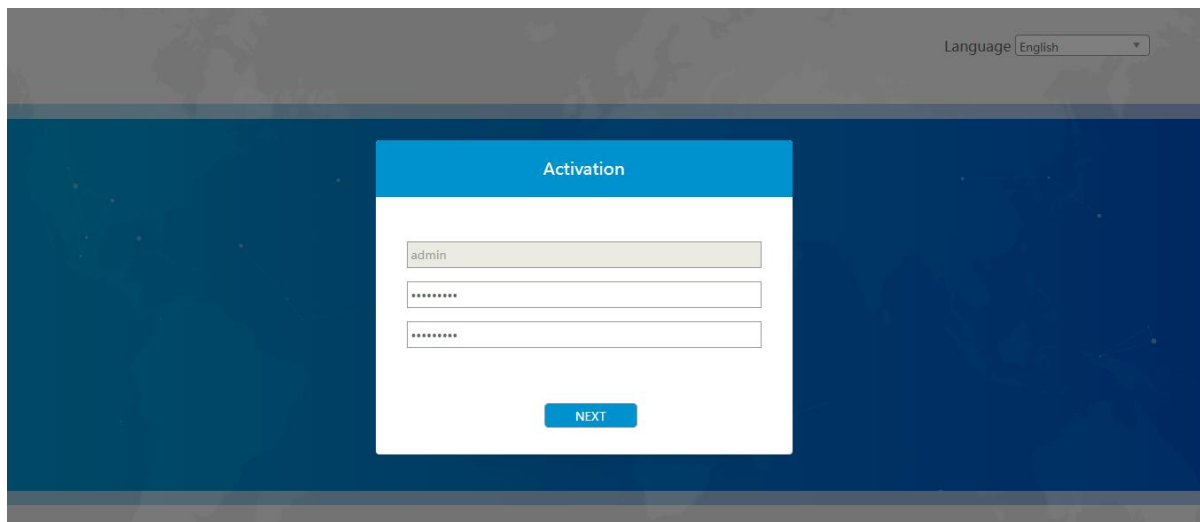
Step 3: Open the Browser and type 192.168.1.1 to access the web GUI.

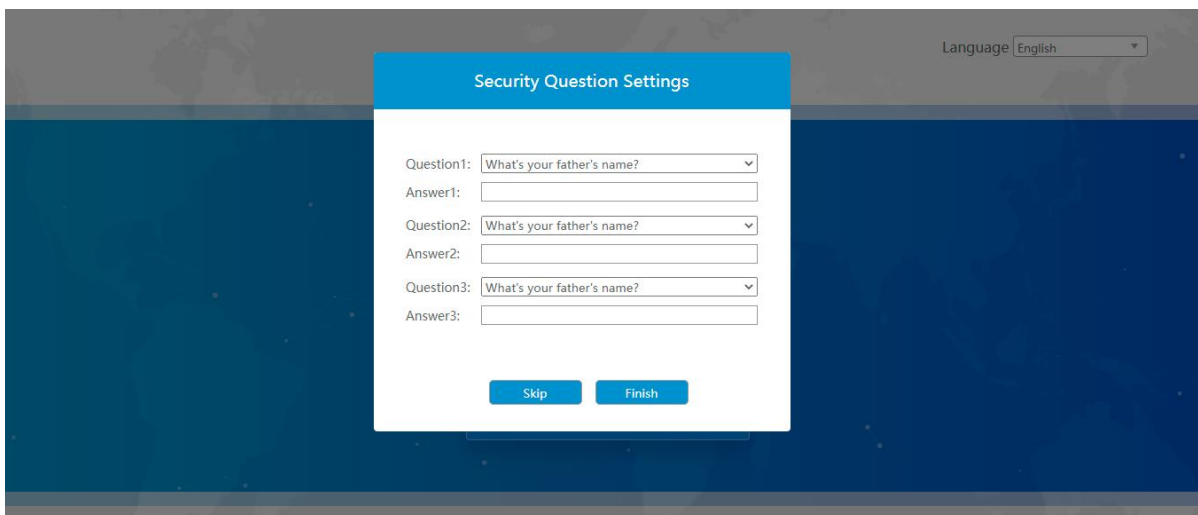
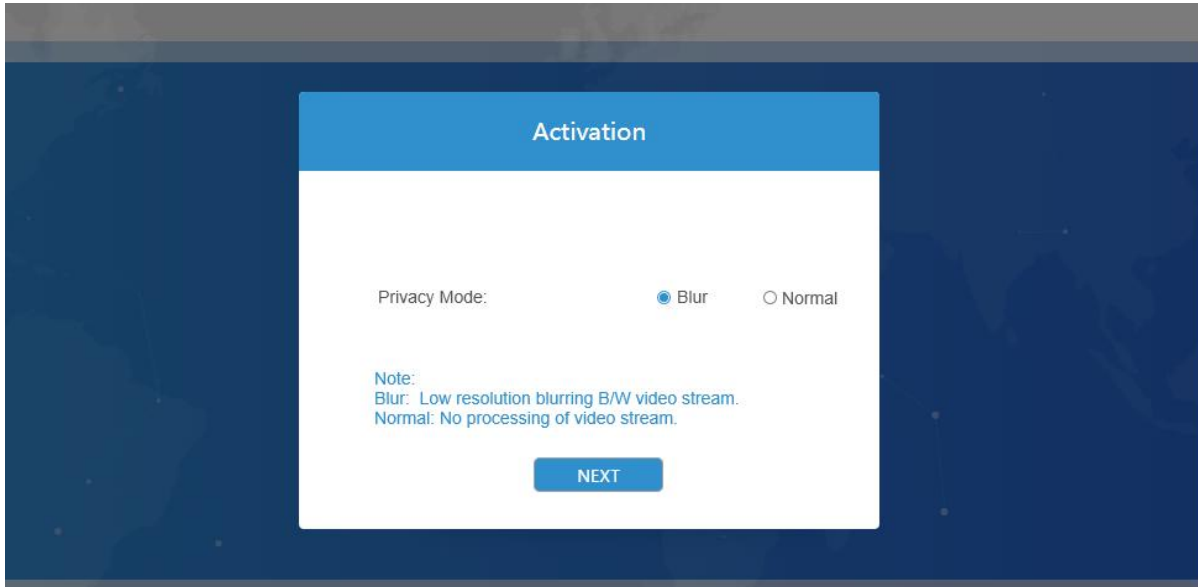
Step 4: Select the language.

Step 5: Users need to set the password and privacy mode when using the sensor for the first time. And three security questions can also be set optionally. After configuration, use username (admin) and custom password to log in the sensor.

Note:

- 1) Password must be 8 to 32 characters long, containing at least one number and one letter.
- 2) You can click the "forgot password" in login page to reset the password by answering three security questions when you forget the password, if you set the security questions in advance.





3.2 Access with Plugin

For IE browser access, users need to install the MsActiveX firstly. You can refer the steps as follows:

Step1: Launch the IE browser and enter the IP address of the sensor;

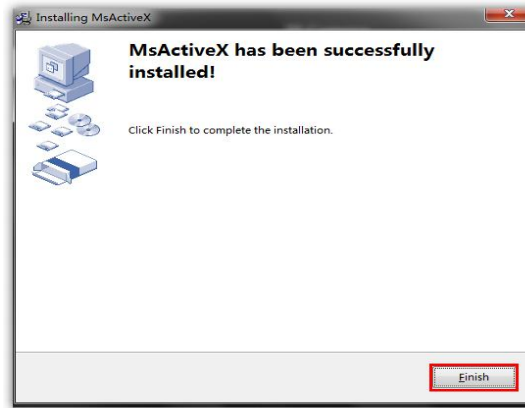
Step2: Enter the user name and custom password and click "Login";

Step3: At the first time to log in the device, the browser will prompt to install Controls, please click "Click here to download and install controls manually" as shown below;

Click here to download and install controls manually

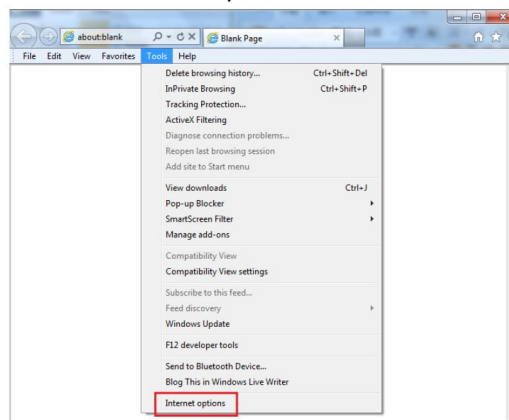
Note: During installing the controls, please keep the browsers close.

Step4: Follow the prompts to install the Controls, when it's finished, it will pop out a window as shown below. Please click "Finish" and refresh the browser, then you will see the video.



If IE9 or higher version browser is used, it is suggested that the web link should be added as a trusted site. See the instructions as follows:

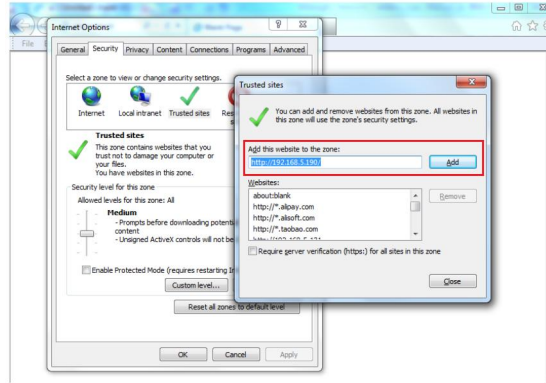
Step1: Start the IE9 or higher version browser, and select “Tools”→ “Internet Options”;



Step2: Select “Security” to “Trusted”;



Step3: Enter the IP address of the device in the blank and click “Add”;




Step4: Enter the IP address. After logging on web GUI successfully, user is allowed to view live video.

4. Operation Guide

4.1 Live Video

After logging on to the device web GUI successfully, user is allowed to view live video as follows.



Parameters	Description
 Configuration	Click to access the configuration page
People Counting (Region) ▾	People Counting (Region): show the mapped or non-mapped regions of people counting Line Crossing Counting: show the detection line and counting people it detected

4.2 IoT-People Counting

4.2.1 Region People Counting

Users can set the report settings and detection regions here.

Enable:	<input checked="" type="checkbox"/>
Number of People:	0
Settings	
Report Regularly:	<input checked="" type="checkbox"/>
Reporting Interval (s):	<input type="text" value="1800"/>
Report by Result:	<input type="checkbox"/>
Mode:	<input type="text" value="Zero⇌Non-zero"/>
Debounce Time:	<input checked="" type="checkbox"/>
Set Detection Region	
Enable:	<input type="checkbox"/>
Detection Area:	<input type="text" value="Mapped Region"/>
Reporting Type:	<input type="text" value="Region People Counting"/>

Parameters	Description
Enable	Enable or disable region people counting feature.
Number of People	Show current number of people.
Report Regularly	Report the current number of people according to reporting interval. Reporting Interval: 5-3600 s, default: 300 s
Report by Result	Report according to the following changes of people number result: <ul style="list-style-type: none"> ● Zero to Non-zero/Non-zero to Zero ● Once result changes
Debounce Time	VS121 will reduce the count value only when the people come out of the detection area for more than 2 s.
Enable	Enable the detection area customization feature. If disabled, the whole area will be the detection area.
Detection Area	Select the customized area as either mapped or except mapped area. You can draw the area in the below screen. 16 regions can be set at most. Mapped Region: Only people who are in the mapped region will be detected. Non-mapped Region: Only people who are not in the mapped region will be detected. Note: when drawing the area, right click the mouse can make the area closed.
Reporting Type	When detection area is in Mapped Region type, users can select two reporting

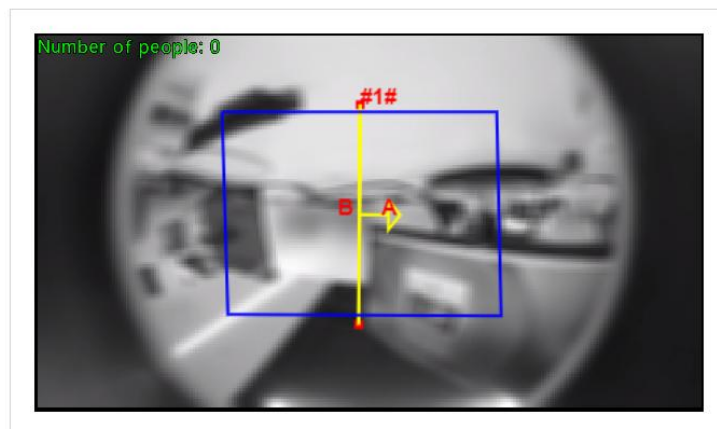
	<p>types:</p> <p>Occupancy: upload the occupancy status of per mapped region as 0 or 1.</p> <p>Region People Counting: upload the specific number of people of per mapped region. Note that the device only allows to report the number in the first 8 regions.</p>
Clear	Clear all areas you have drawn before.

4.2.2 Line Crossing Counting

The sensor will count the number of people who crossed a defined virtual line, then upload the count value according to the reporting interval.

Enable:	<input checked="" type="checkbox"/>
Reporting Interval (s):	<input type="text" value="300"/>
Filter U-turns:	<input checked="" type="checkbox"/>

Set Detection Line



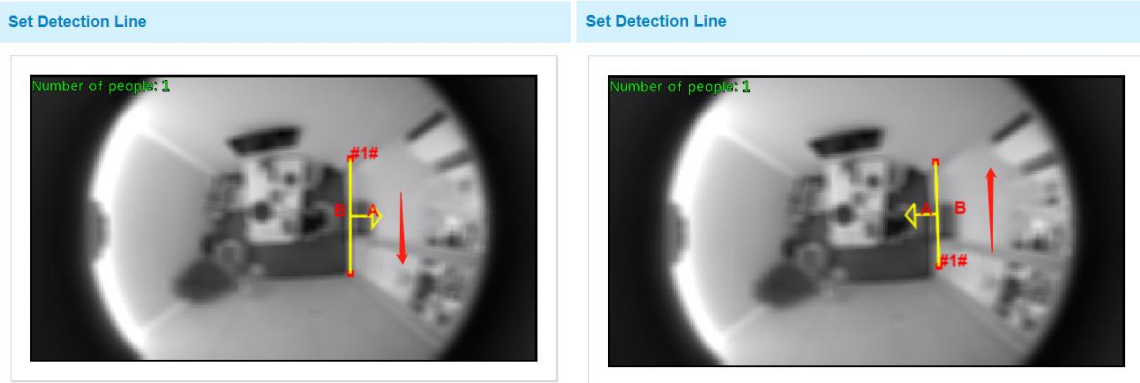
Draw Area Draw Line

Clear Area

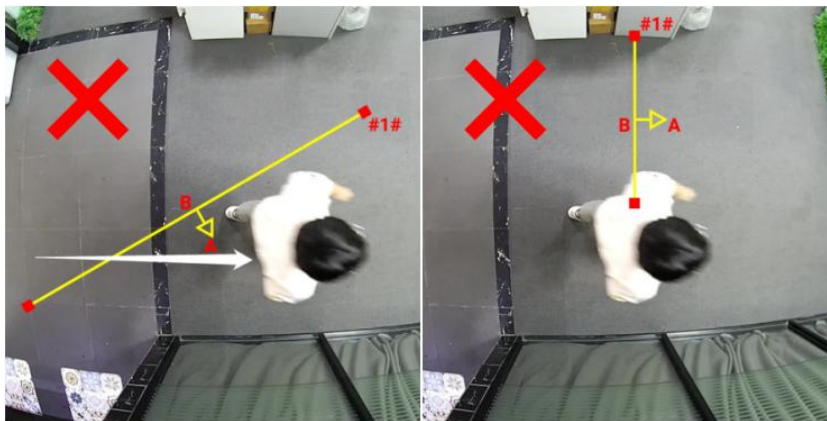
Parameters	Description
Enable	Enable or disable line crossing counting feature.
Reporting Interval	Report the count value of people in/out during the reporting interval, the device will clean the previous values to re-count after reported, range: 5-3600 s, default: 300 s
Filter U-turns	When enabled, it allows to draw an area and the device will count the in and out values only when people cross along this area.
Set Detection Line	The device allows to set up only one line. For the detection line, crossing along the direction of the arrow means "In" and the opposite is "Out".
Clear Line	Clear the line you have drawn before.
Clear Area	Clear the area you have drawn before.

Note:

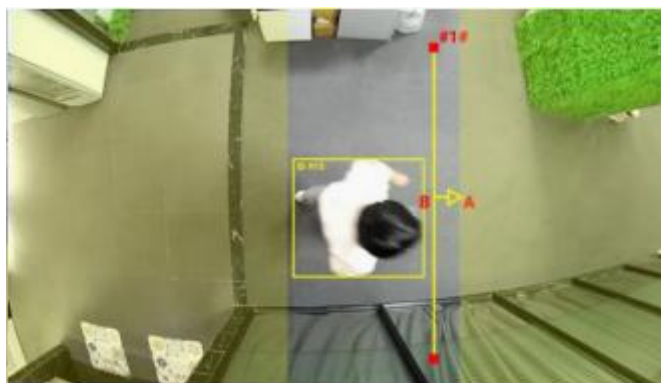
1) The arrow direction of the detection line depends on your drawing direction.



2) Ensure that the detected targets can pass through the detection line completely. It's recommended that the detection line is perpendicular to the In/Out direction and on the center of detection area without other objects around.



3) A redundant identification area needed to be left on both sides of the detection line for the target. This is to ensure that the sensor has stable recognition and tracking of this target before it passes the detection line, which will make the detection and count more accurate.



4.2.3 Recognition Scheme

You can select the recognition scheme for region people counting.

Algorithm

Recognition Scheme: Algorithm 1 ⓘ

Image

Power Line Frequency: 50Hz

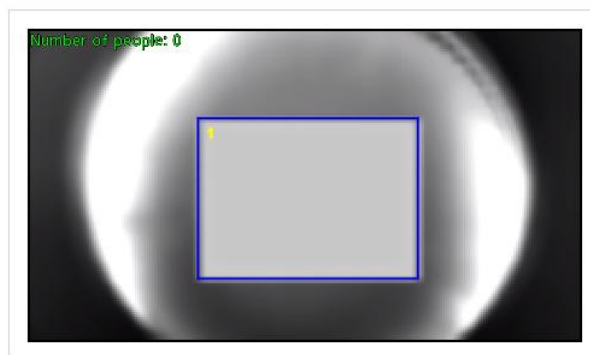
Wide Dynamic Range: Off

Save

Parameters	Description
Recognition Scheme	Select the recognition scheme based on your detection environment. Algorithm 1: Suitable for monitoring complex environments which have many objects, like office supplies (books, printers, lamps, etc.) Algorithm 2: Suitable for monitoring simple and clean environments like meeting rooms. It is suggested to use Algorithm 2 first.
Image	Power Line Frequency: Select based on your power source frequency standard, 60 Hz and 50 Hz are available. Wide Dynamic Range: This function which can capture and display both bright and dark areas in the same frame that enables details of objects in both bright and dark areas to be visible. It's recommended to enable this function when the scene has a clear contrast between light and dark (such as a corridor).

4.2.4 Privacy Mask

Privacy mask enables to cover certain areas on the live video to prevent certain spots in the surveillance area from being viewed and prevent people within the area from being counted. You can set 8 mask areas at most.



Clear All

Enable:

Type: White

ID	Name	Enable	Delete
1	Mask1	<input checked="" type="checkbox"/>	✖

Save

Note: Support up to 8 Privacy Mask areas.

Parameters	Description
Enable	Check the checkbox to enable the Privacy Mask function.
Clear All	Clear all areas you drew before.
Type	Select the color for the privacy areas, there are two colors available: White and Black

4.3 IoT-Communication

4.3.1 LoRaWAN

LoRaWAN settings is used for configuring the transmission parameters in LoRaWAN® network.

Line Crossing Counting [LoRa](#) Wi-Fi Recognition Scheme Privacy Mask

Status:	Activated
Basic Settings	
Device EUI:	24E124600C316312
App EUI:	<input type="text" value="24E124C0002A0001"/>
Join Type:	<input type="text" value="OTAA"/>
Application Key:	<input type="text" value="*****"/>
RX2 Data Rate	<input type="text" value="DR0 (SF12, 125k)"/>
RX2 Frequency/MHz	<input type="text" value="505.3"/>
Advanced Settings	
Confirmed Mode:	<input type="checkbox"/>
ADR:	<input checked="" type="checkbox"/>
Rejoin Mode:	<input checked="" type="checkbox"/>
LinkCheckReq Message Retries:	<input type="text" value="8"/>
Port:	<input type="text" value="85"/>
Spreading Factor:	<input type="text" value="SF10-DR2"/>
LoRaWAN Version:	<input type="text" value="V1.0.3"/>

Parameters	Description
Status	LoRaWAN® network status of this device.
Basic Settings	
Device EUI	Unique ID of the device which can also be found on the label.
App EUI	Default App EUI is 24E124C0002A0001.

Join Type	OTAA and ABP mode are available.
Application Key	Appkey for OTAA mode, default is 5572404C696E6B4C6F52613230313823.
Device Address	DevAddr for ABP mode, default is the 5 th to 12 th digits of SN.
Network Session Key	Nwkskey for ABP mode, default is 5572404C696E6B4C6F52613230313823.
Application Session Key	Appskey for ABP mode, default is 5572404C696E6B4C6F52613230313823.
RX2 Data Rate	RX2 data rate to receive downlinks or send D2D command.
RX2 Frequency/MHz	RX2 frequency to receive downlinks or send D2D command.
Advanced Settings	
Confirmed Mode	If the device does not receive ACK packet from network server, it will resend data once.
ADR Mode	Allow network server to adjust data rate of the device.
Rejoin Mode	The device will send a specific number of LinkCheckReq MAC packets to the network server every 30 mins to validate connectivity; If there is no response, the device will re-join the network.
Application Port	The port used for sending and receiving data, default port is 85.
Spreading Factor	If ADR is disabled, the device will send data via this spreading factor.
LoRaWAN Version	V1.0.2 and V1.0.3 are available.
Region	Frequency plan of this device.
Single-channel Mode	When enabled, only one channel can be selected to send uplinks. Please enable this mode if you connect device to DS7610.
Channel	Enter the index to select the frequency channel. Examples: 1, 40: Enabling Channel 1 and Channel 40 1-40: Enabling Channel 1 to Channel 40 1-40, 60: Enabling Channel 1 to Channel 40 and Channel 60 All: Enabling all channels Null: Indicates that all channels are disabled

Note:

- 1) Please contact sales for device EUI list if there are many units.
- 2) Please contact sales if you need random App keys before purchasing.
- 3) Only OTAA mode supports rejoin mode.

4.3.2 Milesight D2D

Milesight D2D protocol is used for setting up transmission among Milesight LoRaWAN® devices without gateway. When the Milesight D2D setting is enabled, VS121 can work as a Milesight D2D controller for sending control commands to trigger D2D agent devices.

D2D Settings	
Enable D2D	<input checked="" type="checkbox"/>
D2D Key	*****
Control Settings	
Condition 1	Occupied
Control Command 1	0000
Condition 2	Vacant
Control Command 2	0000
Intelligent Delay Time (s)	60 ⓘ

Parameters	Description
Enable D2D	Enable or disable D2D feature.
D2D Key	Define a unique D2D key and this key is the same as the setting in D2D agent device. Default value: 5572404C696E6B4C6F52613230313823
Condition	Occupied: when total people counter value is non-zero in detection area Vacant: when total people counter value is 0 in detection area
Control Command	Define a 2-byte hexadecimal control command (0x0000 to 0xffff). When the condition is meet, the device will send the control command to corresponding D2D agent devices.
Intelligent Delay Time (s)	The device will send the control command only when the detected condition remains Vacant (number of people =0) during this delay time.

Note: When this feature is enabled, the control command from this device will not send to LoRaWAN® gateway.

4.3.3 Wi-Fi

Enable:	<input checked="" type="checkbox"/>
Work Mode:	AP
SSID:	<input type="text" value="Workplace Sensor_F5BA09"/>
SSID Broadcast:	<input checked="" type="checkbox"/>
Protocol:	<input type="text" value="802.11n (2.4G)"/>
Bandwidth:	<input type="text" value="20MHz"/>
Channel:	<input type="text" value="auto"/>
Security Mode:	<input type="text" value="No Encryption"/>
DHCP Server Settings:	
LAN IP Address:	<input type="text" value="192.168.1.1"/>
Netmask:	<input type="text" value="255.255.255.0"/>
Start Address:	<input type="text" value="192.168.1.100"/>
End Address:	<input type="text" value="192.168.1.199"/>
Lease Time (min):	<input type="text" value="1440"/>
Primary DNS Server:	<input type="text" value="114.114.114.114"/>
Secondary DNS Server:	<input type="text" value="8.8.8.8"/>
Static IP	
MAC Address	IP Address
<input type="text"/>	<input type="text"/> <input type="button" value="x"/>

Parameters	Description
Enabled	Enable Wi-Fi feature.
Work Mode	Work mode is fixed as AP and can not connect to other access point.
SSID	The unique name for this device Wi-Fi access point.
SSID Broadcast	When disabled, other wireless devices can't find the SSID, and users should enter the SSID manually to get access to the wireless network.
Protocol	802.11b (2.4 GHz), 802.11g (2.4 GHz), 802.11n (2.4 GHz) are optional.
Bandwidth	20 MHz or 40 MHz are optional.
Channel	Select the wireless channel. Auto, 1,...11 are optional.
Security Mode	No Encryption, WEP Open System, WEP Shared Key, WPA-PSK, WPA2-PSK and WPA-PSK/WPA2-PSK are optional.
DHCP Server Settings	LAN IP Address: IP address that used to access the web GUI of sensor.
	Subnet mask: identify the subnet where the sensor is located.

	Start Address: define the beginning of IP address pool which assigns to DHCP clients.
	End Address: define the end of IP address pool which assigns to DHCP clients.
	Lease Time (min): the lease time on which DHCP client can use the IP address assigned by the sensor.
	Primary DNS Server: translate the domain name to IP address.
	Secondary DNS Server: backup DNS server.
Static IP Settings	Add MAC address and static IP address if users need to add a static IP address to a specific computer.

4.4 System

User

Security Question

Security Question: Edit

Account Management

Admin Password:

User Level: Administrator ▼

User Name:

New Password:

Confirm:

Save

Parameters	Description
Security Question	Click Edit button to set three security questions for your device. In case that you forget the password, you can click Forget Password button on login page to reset the password by answering three security questions correctly.

	<div data-bbox="571 197 1214 680" style="border: 1px solid #ccc; padding: 10px;"> <p style="text-align: center; color: #007bff; margin: 0;">Security Question Settings</p> <p>Admin Password: <input type="password"/></p> <p>Security Question1: <input type="text" value="What's your father's name?"/> ▼</p> <p>Answer1: <input type="text"/></p> <p>Security Question2: <input type="text" value="What's your father's name?"/> ▼</p> <p>Answer2: <input type="text"/></p> <p>Security Question3: <input type="text" value="What's your father's name?"/> ▼</p> <p>Answer3: <input type="text"/></p> <p style="text-align: center; margin-top: 10px;"><input type="button" value="Save"/></p> </div> <p data-bbox="395 696 1398 768">There are twelve default questions below, you can also customize the security questions.</p> <div data-bbox="544 801 1246 1155" style="border: 1px solid #ccc; padding: 5px;"> <p style="background-color: #007bff; color: white; margin: 0;">What's your father's name?</p> <p>What's your favorite sport?</p> <p>What's your mother's name?</p> <p>What's your mobile number?</p> <p>What's your first pet's name?</p> <p>What's your favorite book?</p> <p>What's your favorite game?</p> <p>What's your favorite food?</p> <p>What's your lucky number?</p> <p>What's your favorite color?</p> <p>What's your best friend's name?</p> <p>Where did you go on your first trip?</p> <p>Customized Question</p> </div>
Account Management	<p data-bbox="395 1196 1382 1227">Admin Password: enter the correct admin password before adding an account.</p> <p data-bbox="395 1238 871 1270">User Level: It's fixed as Administrator.</p> <p data-bbox="395 1281 788 1312">User Name: It's fixed as admin.</p> <p data-bbox="395 1323 999 1355">New Password: Input password for the account.</p> <p data-bbox="395 1366 799 1397">Confirm: Confirm the password.</p>

Security Service

SSH Settings

Enable SSH:

SSH Port:

Parameters	Description
Enable SSH	Enable SSH feature.
SSH Port	Set the port to access this sensor via SSH.

System Info

All information about the hardware and software can be checked on this page.

System	
Device Name:	Workplace Sensor
Product Model:	VS121-915M
SN:	6600B5053760
Hardware Version:	V1.3
Software Version:	31.7.0.78-iot2
MAC Address:	24:E1:24:F3:C5:B2

System Maintenance

System Upgrade	
Software Version:	31.7.0.78-iot2
Local Upgrade:	<input type="button" value="Choose File"/> No file chosen <input type="button" value="Upgrade"/> <input type="checkbox"/> Reset after Upgrading

Note: Do not disconnect the power of the device during the upgrade.

Maintenance	
Reset <input checked="" type="checkbox"/> Keep the User Information	<input type="button" value="Reset"/>
Export Config File:	<input type="button" value="Export"/>
Config File:	<input type="button" value="Choose File"/> No file chosen
Import Config File:	<input type="button" value="Import"/>

Reboot	
Reboot the Device:	<input type="button" value="Reboot"/>

Parameters	Description
System Upgrade	<p>Software Version: The software version of the sensor.</p> <p>Local Upgrade: Click the Choose File button and select the upgrading file, then click the Upgrade button to upgrade. After the system reboots successfully, the update is done.</p> <p>You can check Reset after Upgrading to reset the device after upgrading it.</p> <p>Note: Do not disconnect the power of the device during the upgrade process. The device will be restarted to complete the upgrading.</p>
Maintenance	<p>Reset settings: Click Reset button to reset the device to factory default settings</p> <p>Keep the User Information: Check this option to keep the user information when resetting</p> <p>Export Config File: Export configuration file.</p> <p>Import Config File: Click the Choose File button and select the configuration file, click Import button to import configuration file.</p>
Reboot	Restart the device immediately

About

User can view some open source software licenses about the sensor by clicking the View Licenses button.

Open Source Software Licenses

View Licenses

5. Mount the Sensor

To better utilize the advantages of AI algorithm, there are some important steps to follow :

5.1 Recommended Height for Certain Object

Object	Height	Note
sitting object	>2.5m (8.2ft)	Commonly used for Region People Counting
standing object	>3m (9.8ft) (the optimum height is 3m)	Commonly used for Line Crossing Counting

Recommended detection ranges for region people counting at different heights:

Height	Recommended detection range
2.5m	3m*4m
3m	4.4m*5.7m
3.5m	4.9m*6.4m
4m	5.6m*7.4m

5.2 Illuminance Requirements for AI Analysis

❖ Region People Counting

There is no requirement for illuminance, but we recommend enabling WDR function(Turn to [page 17](#)), which will make the image effect better.

❖ Line Crossing Counting

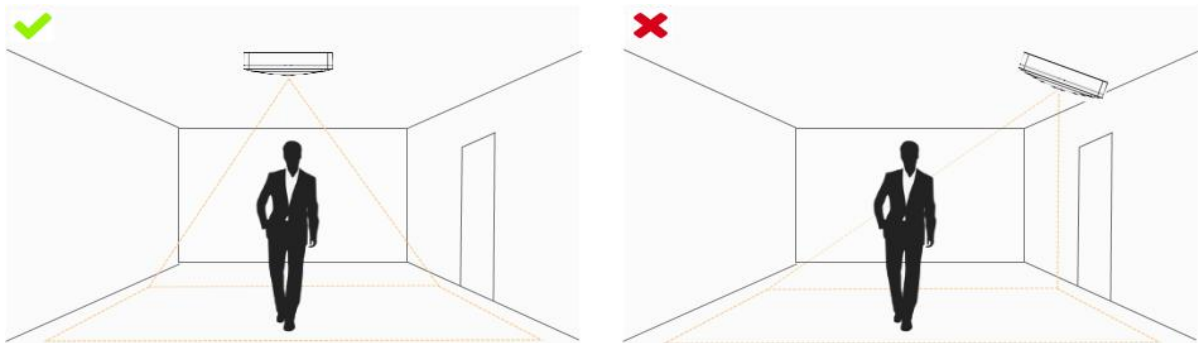
- We recommend that the illuminance is greater than 50Lux.
- When the illuminance is between 20~50Lux, we recommend disabling WDR function.
- When the illuminance is >50Lux and the scene has a clear contrast between light and dark (such as a corridor), we recommend enabling WDR function.

To know the illuminance of the current scene, you must use an illuminance meter, or you can refer to the following common environmental illuminance values:

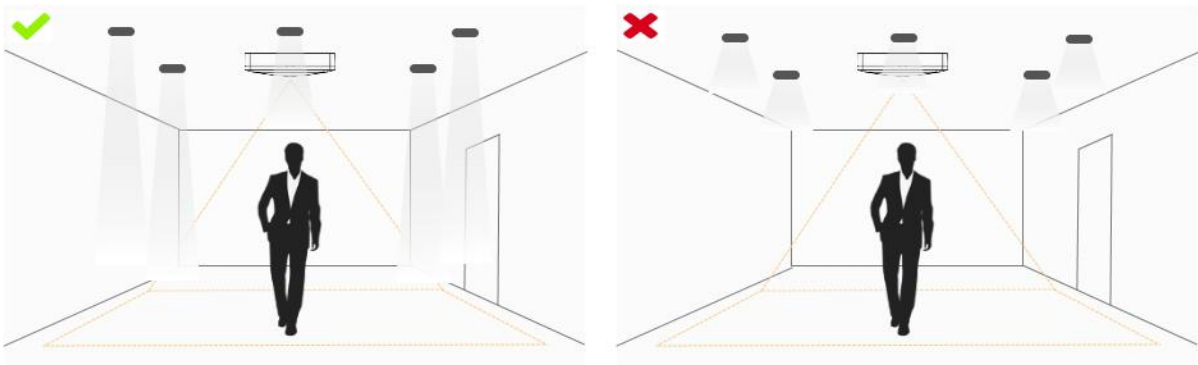
place/environment	illuminance
Indoors at dusk	10Lux
cloudy indoor	5~50Lux
sunny indoor	100~1000Lux

5.3 Recommended Installation for Line Crossing Counting

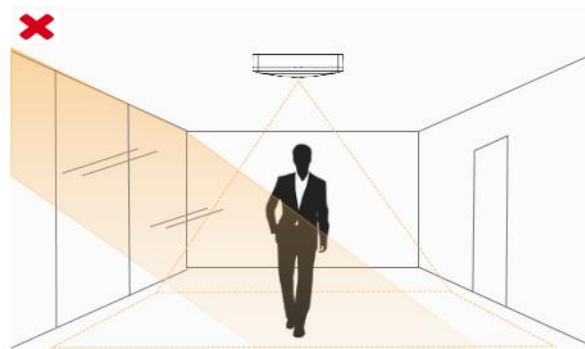
- Make sure the sensor is facing straight down, in line with the ceiling.



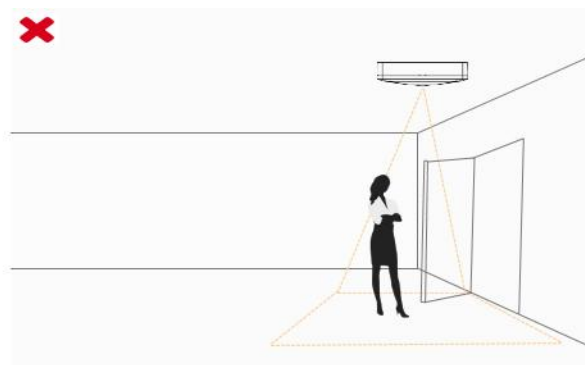
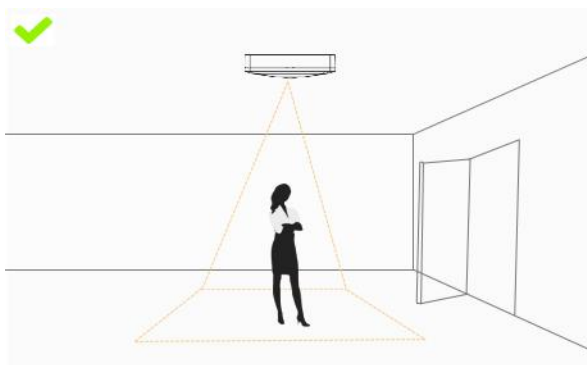
- Make sure there is sufficient white light on site.



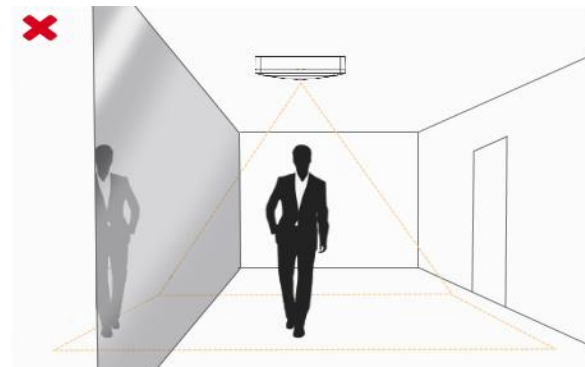
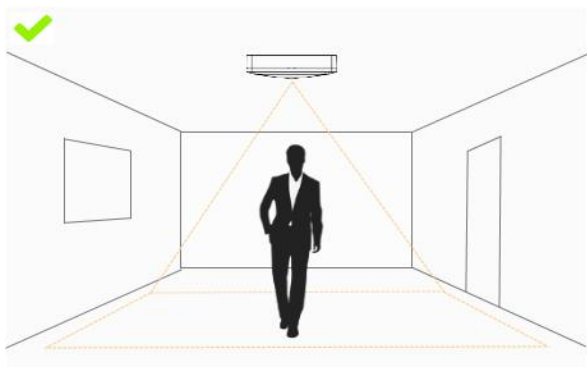
- Avoid getting very strong light, like sunlight.



- Make sure there are no moving objects interfering in the counting area. For example, do not install the sensor too close to a door.



- Avoid installing the sensor near a mirror or avoid drawing the line to the mirror.



5.4 Factors Affecting Accuracy

- The color of hair or clothes is close to the floor color.
Reason: It will make it difficult for the algorithm to identify the correct object, thus affecting the accuracy.
- The floor color and wall color are black.
Reason: The brightness of the scene will be reduced due to the absorption of light by black.
- The contrast between light and dark in the scene is too strong.
Reason: It will cause the people to be backlight, which will affect the accuracy of the detection.

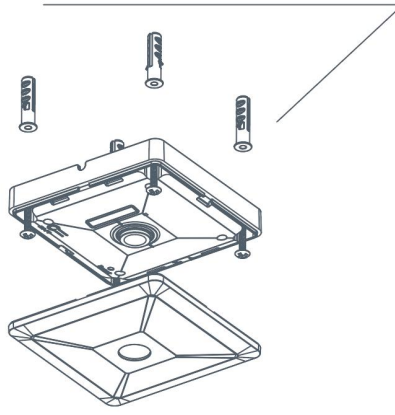
5.5 Ceiling Installation

Step 1: Ensure the thickness of ceiling is more than 30 mm, then attach the mounting sticker to the ceiling and drill 4 holes with a diameter of 6 mm.

Step 2: Fix the wall plugs into the ceiling holes.

Step 3: Remove the cover on the device, then fix the device to the wall plugs via mounting screws; remember to adjust the mounting direction according to the detection area requirement and direction sticker on the inner cover.

Step 4: Take the cover back to device; note that the Milesight Logo should be facing the LED indicator.



6. Device Payload

VS121 reports basic information only when joining the network and reports people counter according to reporting settings. All data are based on following format(HEX):

Channel1	Type1	Data1	Channel2	Type2	Data2	Channel 3	...
1 Byte	1 Byte	N Bytes	1 Byte	1 Byte	M Bytes	1 Byte	...

For decoder examples please find files on <https://github.com/Milesight-IoT/SensorDecoders>.

6.1 Uplink Data

VS121 report basic information of sensor whenever joining the network and the number of people according to settings.

Channel	Type	Description
ff	01(Protocol Version)	01=> V1
	08 (Device SN)	12 digits
	09 (Hardware Version)	01 04 => V1.4
	1f (Software Version)	1f 07 00 4b => V31.7.0.75
04	c9 (Region People Counter)	Byte 1: current total number of people Byte 2: how many mapped regions is customized

		Byte 3-4: 8 bits, indicate current occupancy status of per mapped region, 0 means this region is vacant, 1 means this region is occupied
05	cc (Line Cross Counter)	Byte 1-2: in counter during the report interval Byte 3-4: out counter during the report interval
06	cd (Max People Counter)	Maximum number of people in detection area during the reporting interval of region people counting. Note: this value only update when reporting regularly.
07	d5 (Per Region People Counter)	8 bytes, every byte indicate the current number of people from mapped region 1 to 8

Example:

1. Device information

ff0101 ff086600b0940976 ff090100 ff1f1f07004b					
Channel	Type	Value	Channel	Type	Value
ff	01 (Protocol Version)	01 (V1)	ff	08 (Device SN)	66 00 b0 94 09 76
Channel	Type	Value	Channel	Type	Value
ff	09 (Hardware version)	0100 (V1.0)	ff	1f (Software version)	1f 07 00 4b (V31.7.0.75)

2. People counter regular uplink when reporting type is Occupancy

04c9030800a1 06cd05		
Channel	Type	Value
04	c9 (Region People Counter)	Byte 1: 03 => There are 3 people totally currently Byte 2: 08 => there are 8 mapped regions Byte 3-Byte 4: 00 a1=>1010 0001 Region 1, 6 and 8 are occupied, others are vacant
Channel	Type	Value
06	cd (Max People Counter)	05 => during the reporting interval, the maximum number of people is 5

3. People counter regular uplink when reporting type is Region People Counting

07d50001000000000003 06cd05		
Channel	Type	Value
07	d5 (Per Region People Counter)	Byte 2: 01 => there are 1 person in region 2 currently Byte 8: 03 => there are 3 people in region 8 currently
Channel	Type	Value
06	cd (Max People Counter)	05 => during the reporting interval, the maximum number of people is 5

4. Line cross counter

05cc02000100		
Channel	Type	Value
05	Cc (Line Crossing Counter)	In: 02 00 => 00 02 = 2 Out: 01 00 => 00 01 =1

6.2 Downlink Command

VS121 supports downlink commands to configure the device. Application port is 85 by default.

Channel	Type	Description
ff	10 (Reboot)	ff (Reserved)
	04 (Confirmed Mode)	00: disable, 01: enable
	05 (Change LoRaWAN® Channel Mask)	Byte 1: Channel index range 01: 0-15 02: 16-31 03: 32-47 04: 48-63 05: 64-79 06: 80-95 Byte 2-3: indicate disable or enable via every bit, 0=disable, 1=enable
	40 (ADR)	00: disable, 01: enable
	41 (Configure Application Port)	1 Byte, default is 85
	42 (Wi-Fi)	00: disable, 01: enable
	50 (Region People Counting)	00: disable, 01: enable
	43 (Region People Counting)	00: disable, 01: enable

	Report Regularly)	
	44 (Region People Counting Report by Result)	00: disable, 01: enable
	45 (Report by Result Mode)	00: Zero and Non-zero 01: Once result changes
	48 (Line Crossing Counting)	00: disable, 01: enable

Note: after changing LoRaWAN® setting, the device will re-join the network.

Example:

1. Disable the Wi-Fi.

ff4200		
Channel	Type	Value
ff	42 (Wi-Fi)	00: disable

2. Set AU915 or US915 channel mask as 8-15.

ff0501ff00 ff05020000 ff05030000 ff05040000 ff05050000		
Channel	Type	Value
ff	05 (Set Channel Mask)	01: Channel index 0-15, ff00 => 8-15 is enabled 02-05: Channel index 16-79, 0000 => all disabled

3. Reboot the device.

ff10ff		
Channel	Type	Value
ff	10 (Reboot)	ff (Reserved)

-END-