



HR-R 8-1 set

B-Field Probe
up to 40 GHz

LANGER
EMV-Technik

sales@langer-emv.de
www.langer-emv.com
2022-11-25



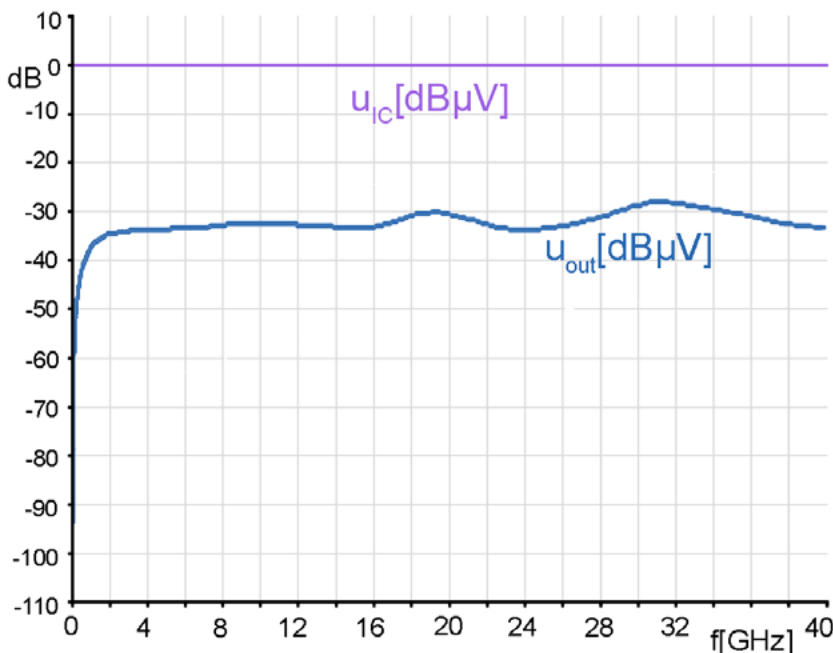
Short Description

The HR-R 8-1 is a passive near-field probe for measuring magnetic fields up to 40 GHz. The measuring tip is decoupled from the cable shield by special damping systems. In addition, the probe contains a current attenuator. The probe has a internal matching network to 50 ohm.

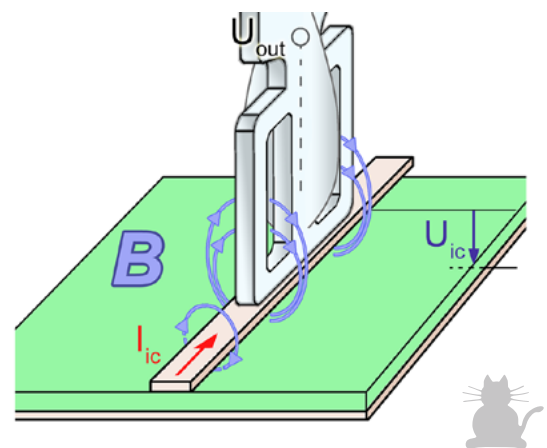
The probe is designed to be guided by hand. The probe is placed vertically and centrally on the RF line for measurement. If reproducible results are to be achieved, the near-field probe must be used in conjunction with a positioning system, for example ICS 105.

To measure in the range up to 40 GHz, a suitable measuring cable is required. It is not included in the scope of delivery and can be ordered optionally. Spectrum analyzers or oscilloscopes can be used for signal evaluation.

Typical frequency response



Schematic measurement setup for measuring magnetic field with the near field probe HR-R 8-1



HR-R 8-1 Technical Parameters

Frequency range	up to 40 GHz
Dimensions Probe head	(4 x 4 x 1) mm
Weight	19 g
Connector	2.92 mm / female
Sizes (L x W x H)	(147 x 9 x 9) mm