

## Main specifications

Parameters	Min	Typical	Max	Units
Frequency	325	~	400	GHz
IL			2	dB
VSWR			1.3	

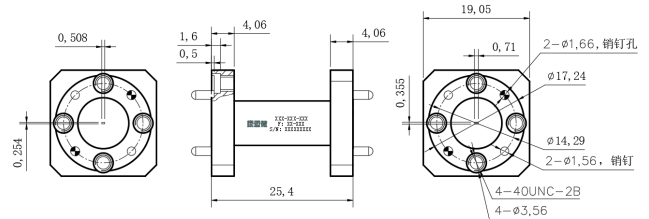
## Other parameters

Waveguide model	Rect waveguider
Connector 1	WR-2
Connector 2	WR-2.8
Flange mode l	FUGP
Surface	Gold-plating
Product shell material	Copper
Work Temp.	-40~+70°C Design assurance
Storage Tem p.	-55~+85°C Design assurance
Other	Industrial grade

## Reference picture



## Configuration (mm)



## Typical test curve

