

5 GHz to 70 GHz Double Ridged Broadband Waveguide Horn Antenna, V-Female Connector (1.85mm)



Applications:

- 5 GHz to 70 GHz Double Ridged Broadband Waveguide Horn Antenna, V-Female Connector (1.85mm)
- EMC/ EMI test Antenna

Features:

- High Power 50W (peak)
- DC Short lightning protection
- Low VSWR
- Uniform Gain
- Consolidated performance database
- 6061 Aluminum metal alloy

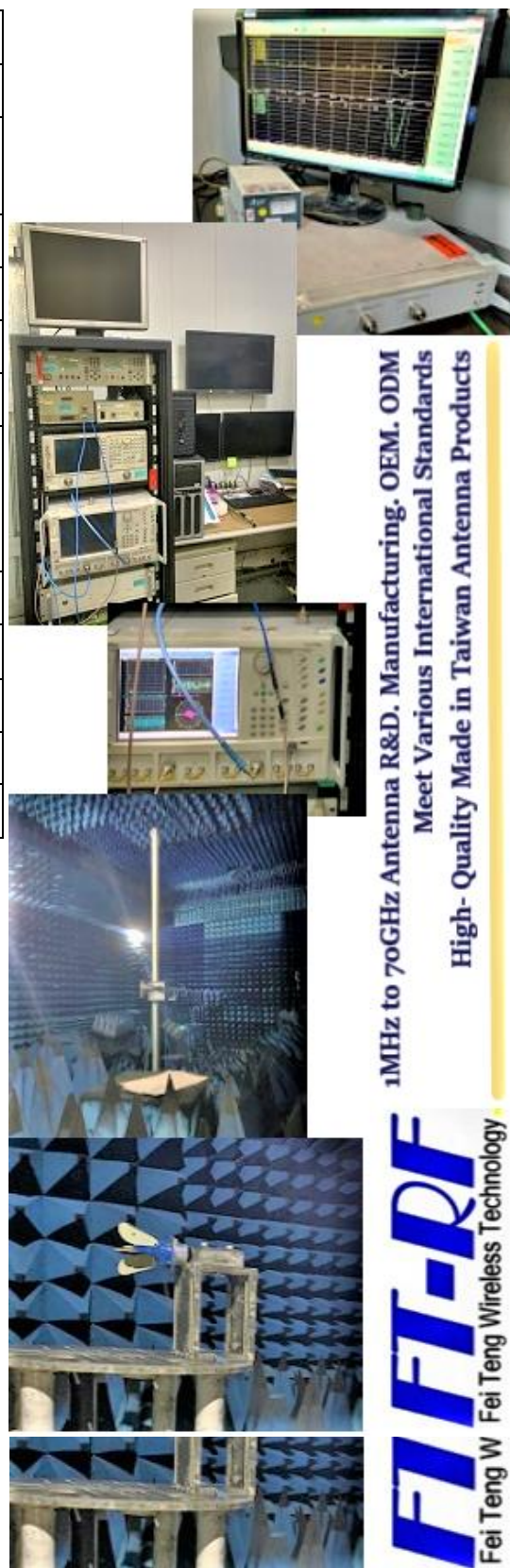
Model:	HA-0570G-VF	-3db Beamwidth:	Hor. 31 deg – Ver. 30 deg
LxWxH:	38x55x74mm	N.W.:	70g
Connector:	V-Female	Frequency:	5GHz to 70GHz
Cable:	1M DC to 70G Cable ×2	Max Power:	50W

Electrical Specifications

Frequency Range	5GHz to 70GHz
V.S.W.R (AVG)	2.5
Antenna Type	Double Ridged Broadband Waveguide Horn Antenna
Radiation	Directional
Gain (dbi)	6 to 25
Factor	35 to 50
Polarization	horizontal or vertical
Maximum Power	50W
5 to 40GHz	25W
40 to 70GHz	
Vertical Beamwidth (AVG)	31
Horizontal Beamwidth (AVG)	30
Impedance	500ohm
Antenna Design	Double Ridged
Connector	Stainless Steel V-Female(1.85mm)

Mechanical Specifications

Dimension (mm)	38x55x74mm
Antenna Weight (N.W)	70
Accessories	Small L Type Aluminum bracket
Application	Indoor
Parts Material	Aluminum and copper
L Mount Style	Yes
Mounting	drawing
Mount Style	Screw or L type
Indexing Ring Mounting	Antenna Mounting M2.5mm
Storage Temperature	-20 to +80
Operating Temperature	-40 to 60
Operating Humidity	10%~70% non-condensing
Storage Humidity	5%~50% non-condensing
Safety, Emission and other	RoHS, WEEE, CE, FCC

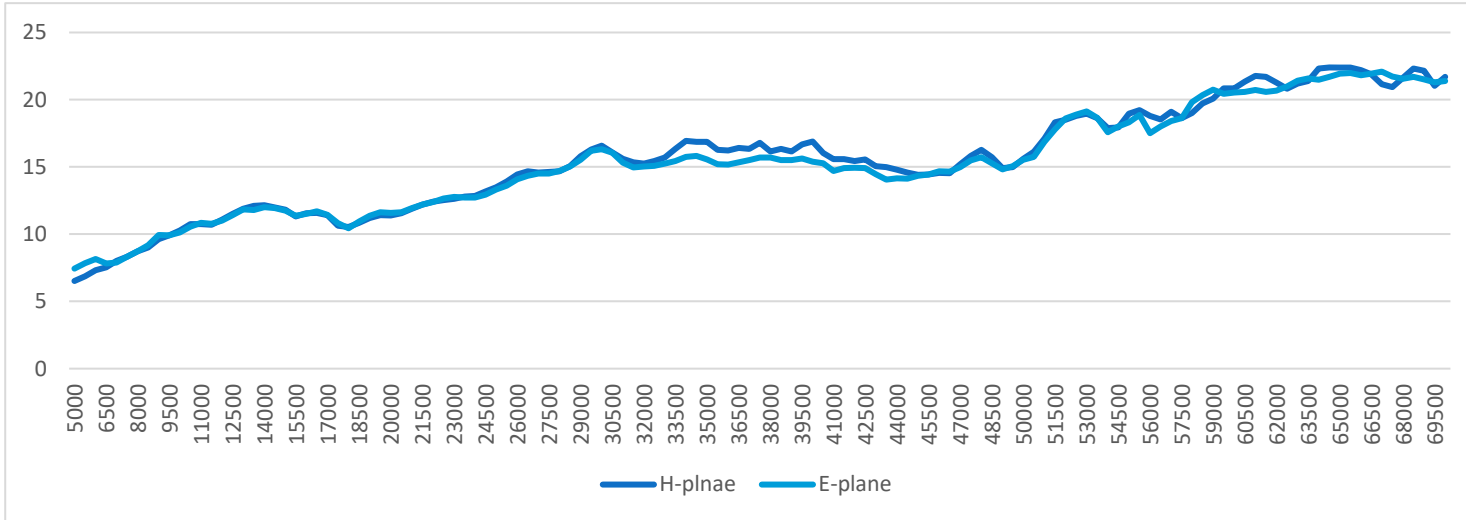


1MHz to 70GHz Antenna R&D. Manufacturing. OEM. ODM
 Meet Various International Standards
 High-Quality Made in Taiwan Antenna Products

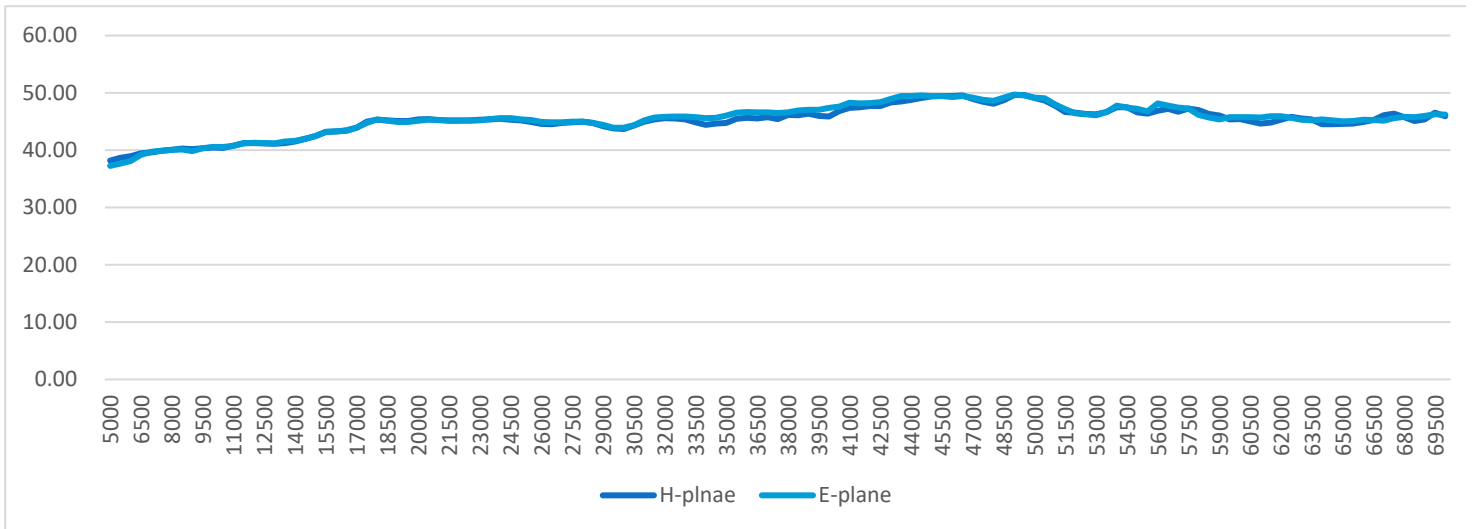
FT-RF
 Fei Teng Wireless Technology

Antenna Gain

Gain



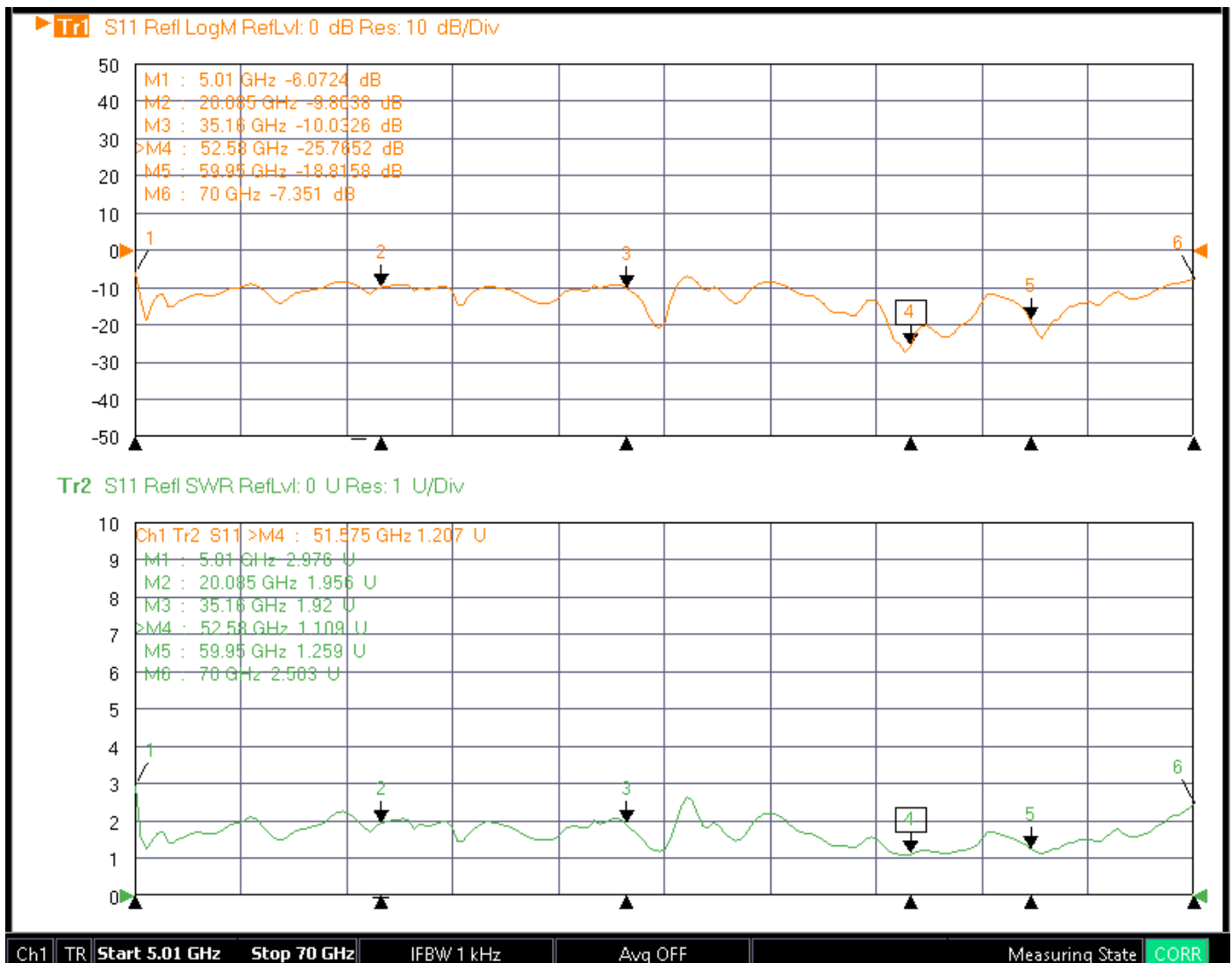
Factor



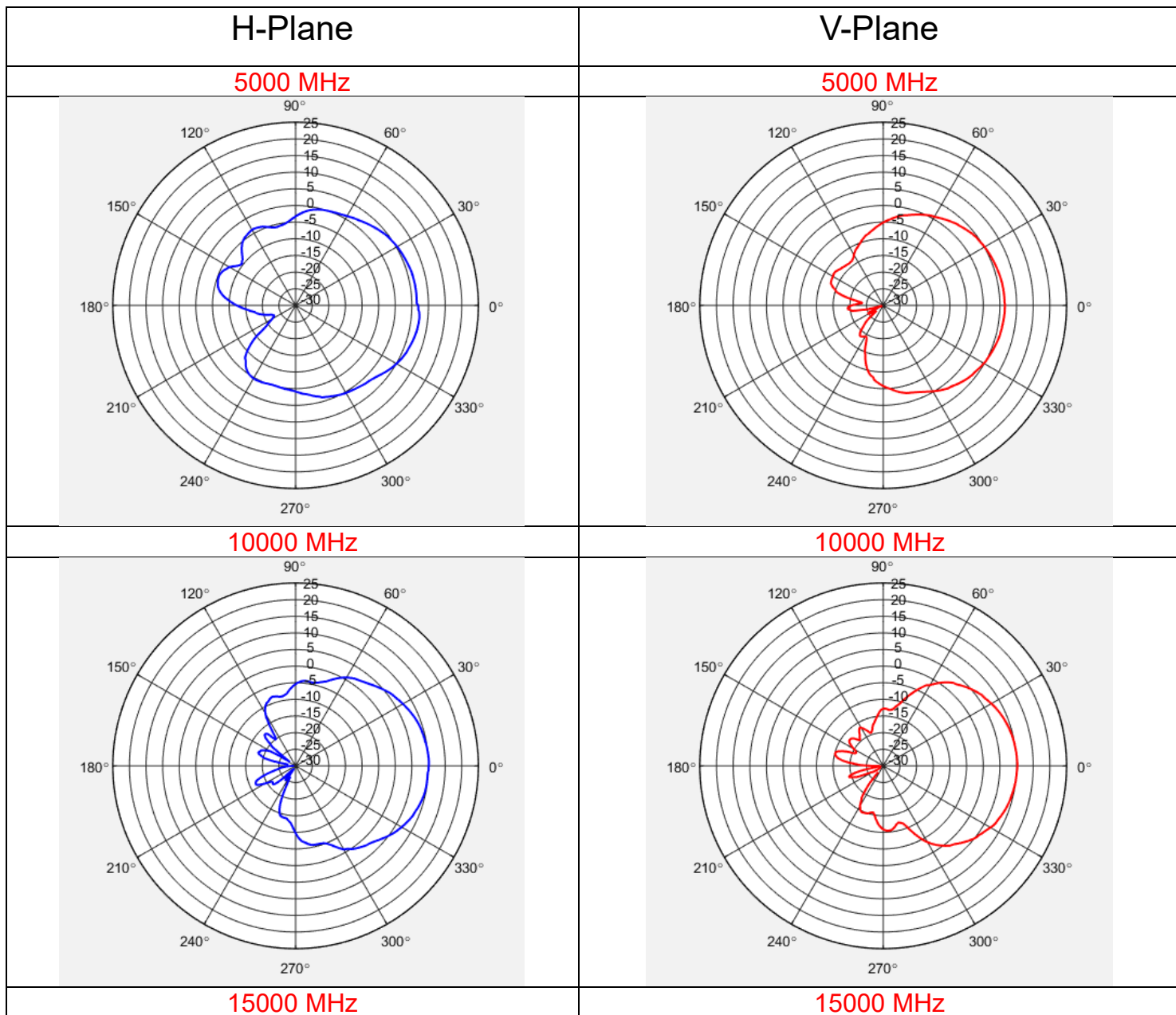
Network Analyzer Test Report

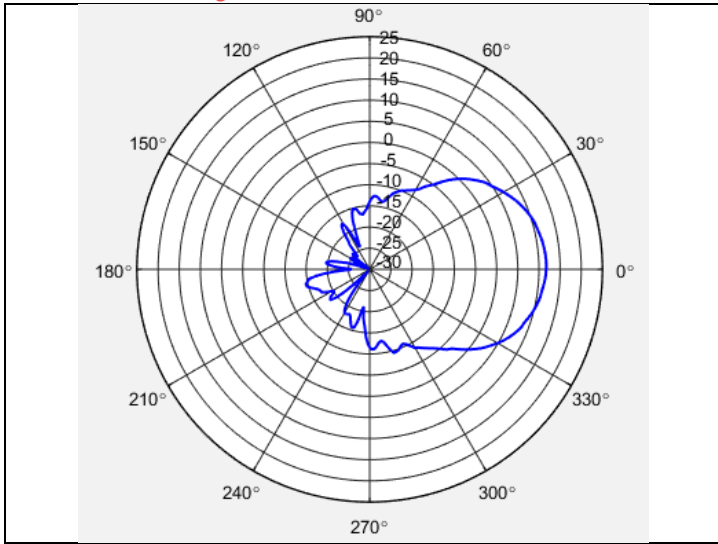
Test Equipment	Anritsu MS4640B 10 Mhz-70 Ghz
Test Equipment Cable	Dc to 70GHz 1.85mm 1M cable
RF connector Adapter	1.85mm
Correction	Anritsu Correction
Test Model	HA-0570G-VF
Test Port	S11

Return loss & V.S.W.R

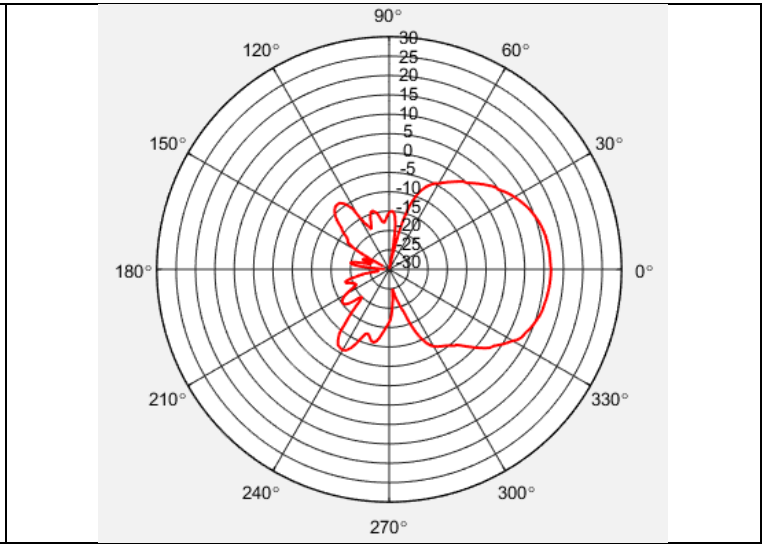


Antenna Pattern

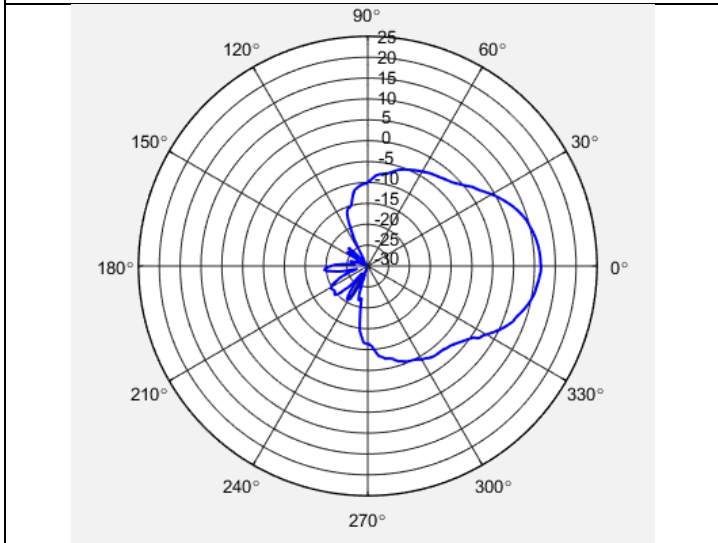




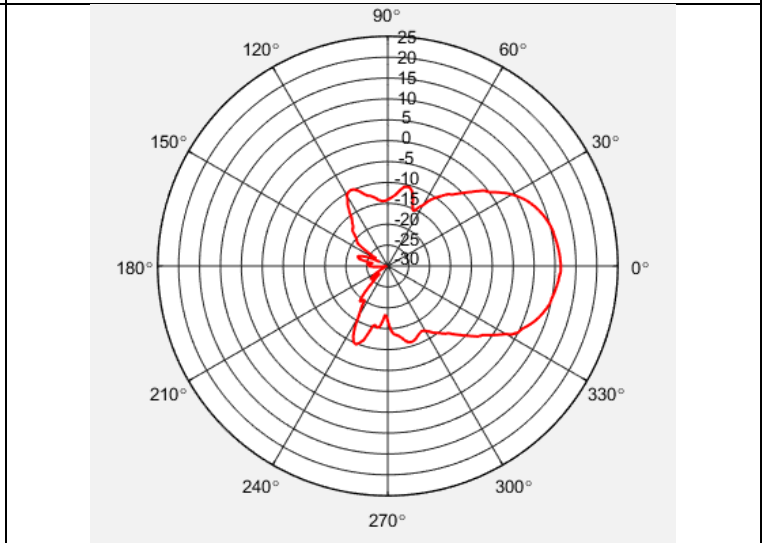
20000 MHz



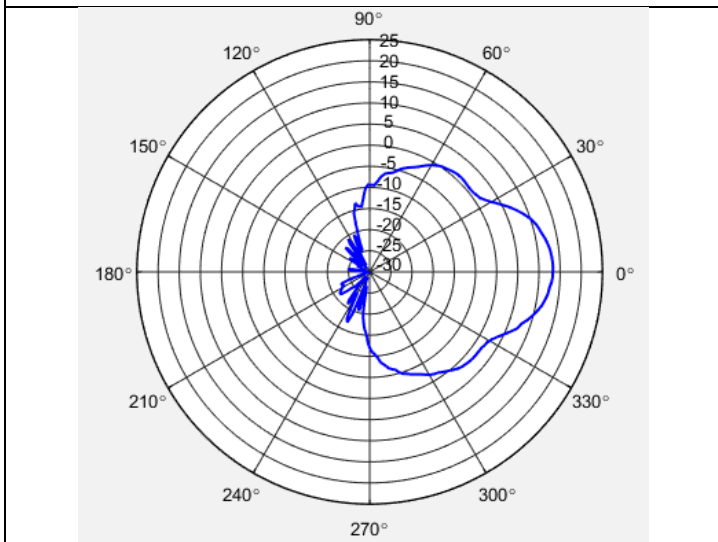
20000 MHz



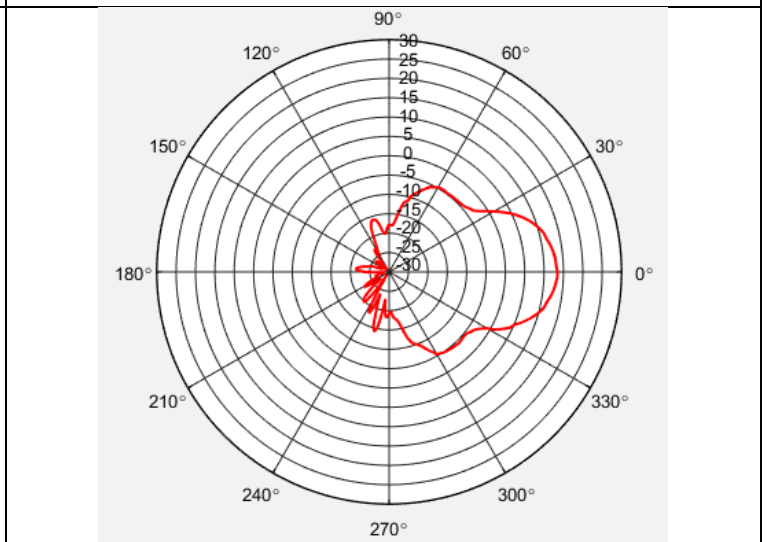
25000 MHz



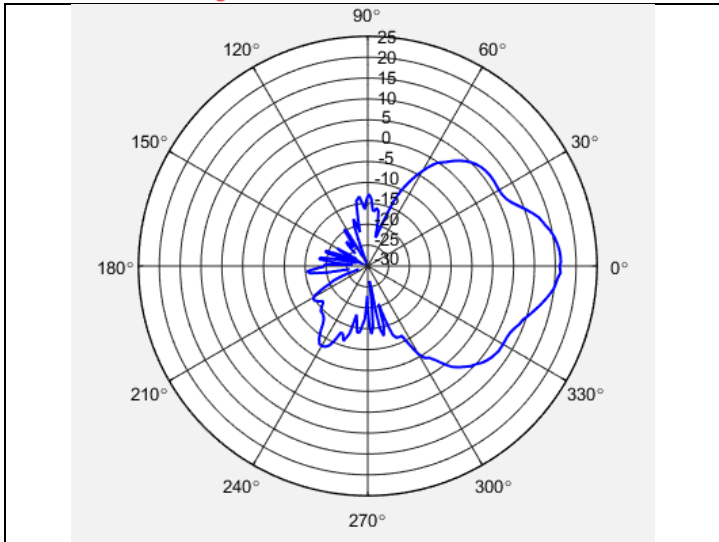
25000 MHz



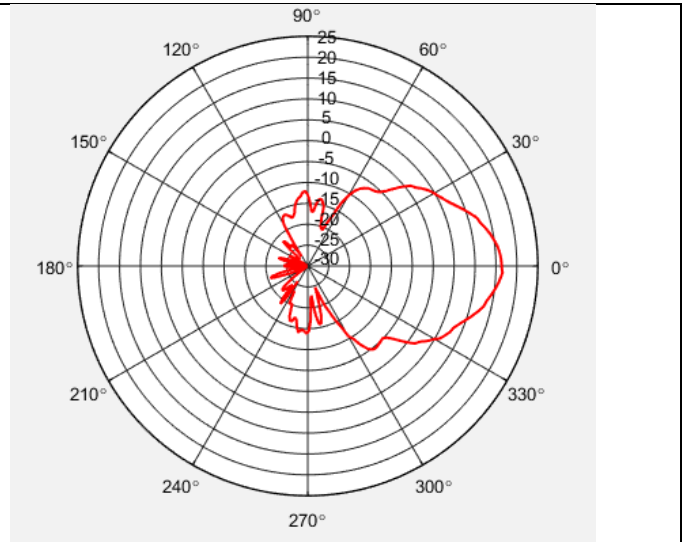
30000 MHz



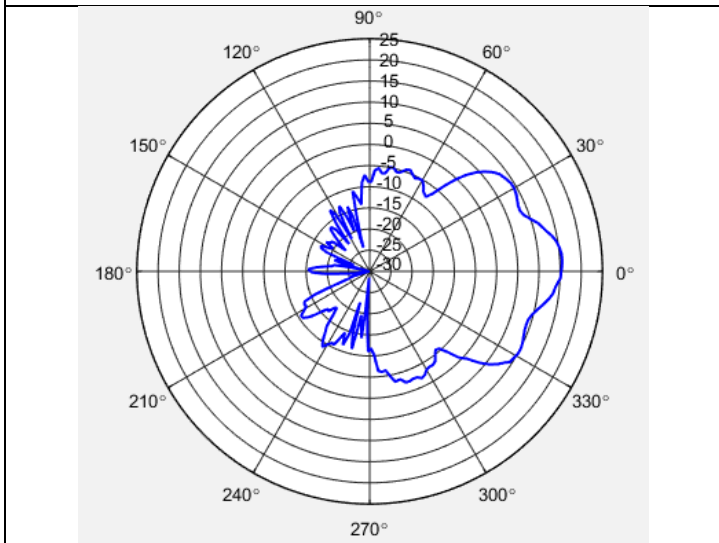
30000 MHz



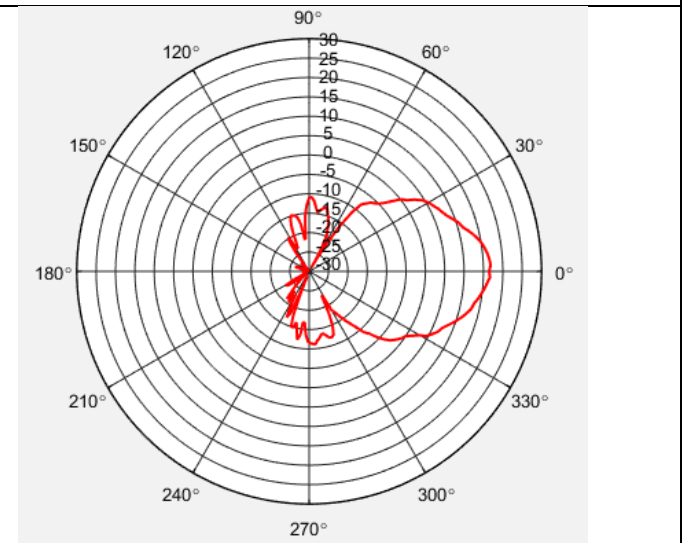
35000 MHz



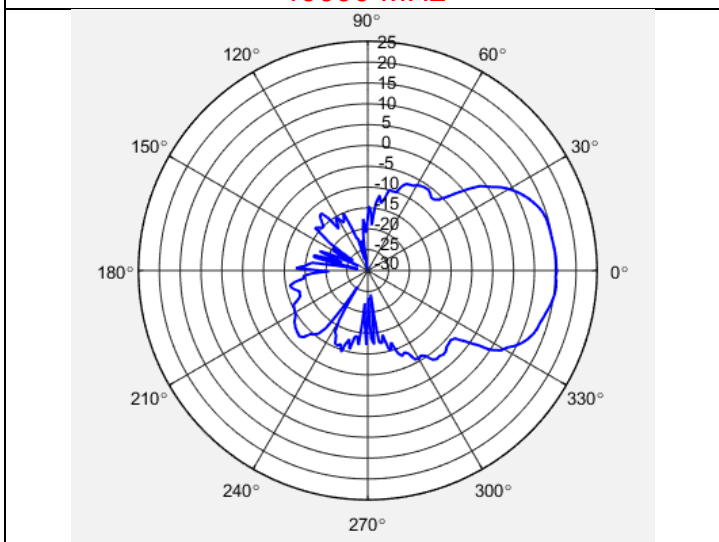
35000 MHz



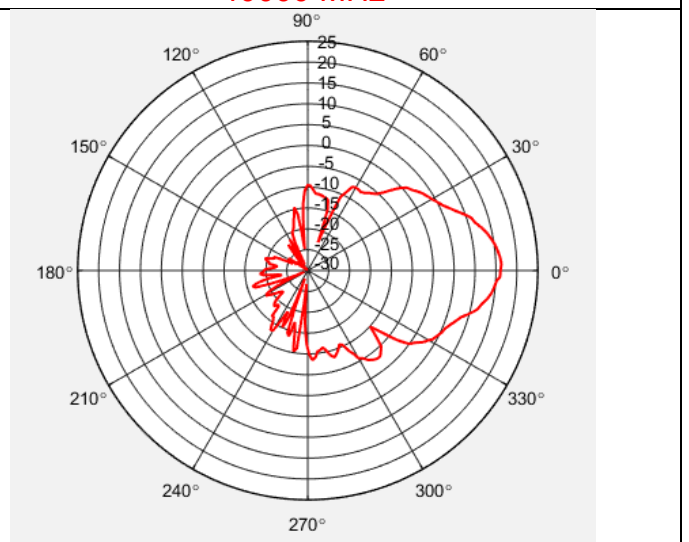
40000 MHz



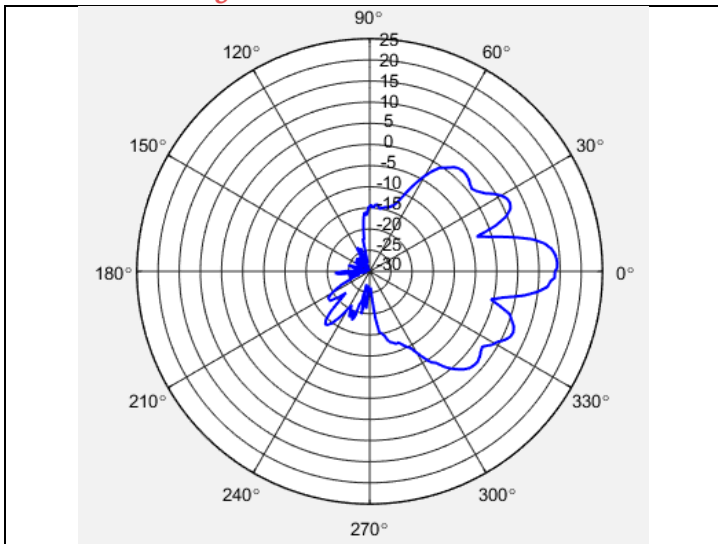
40000 MHz



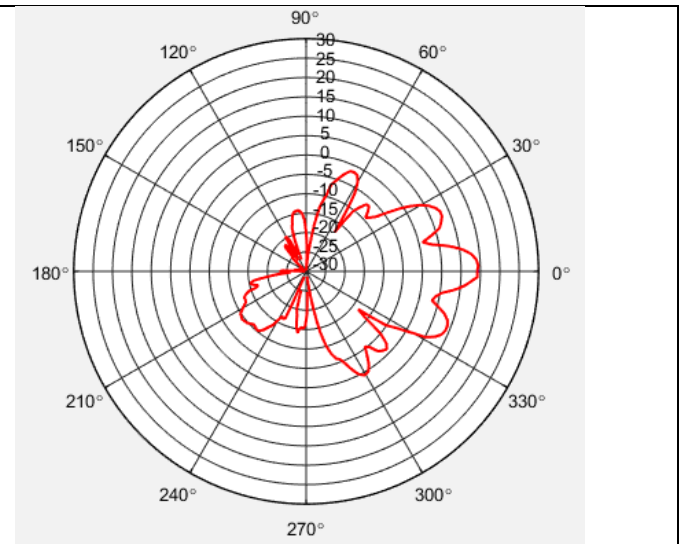
45000 MHz



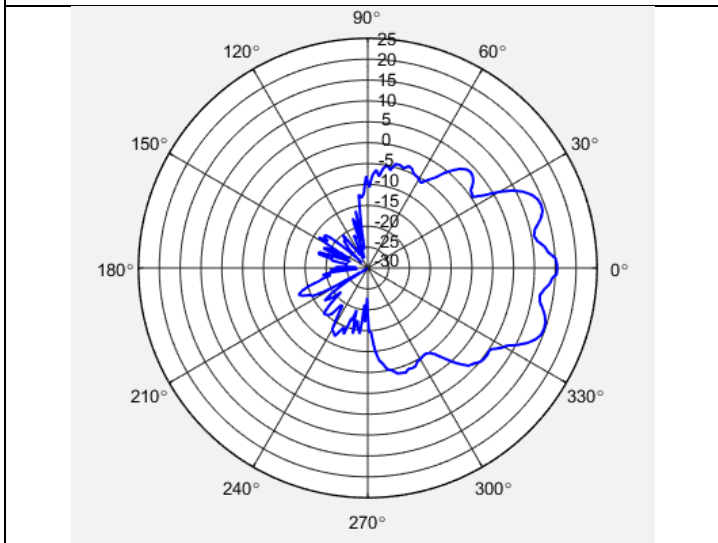
45000 MHz



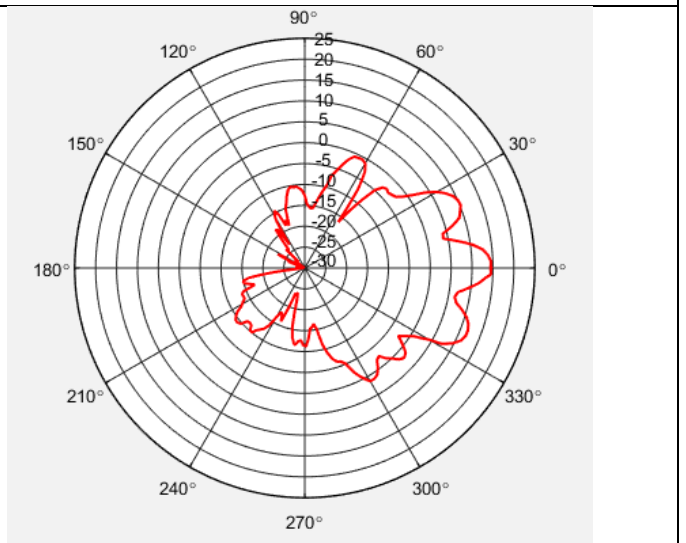
50000 MHz



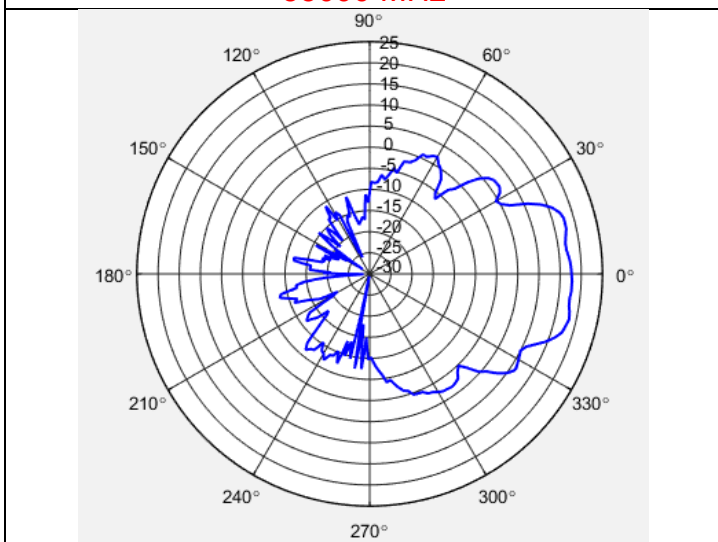
50000 MHz



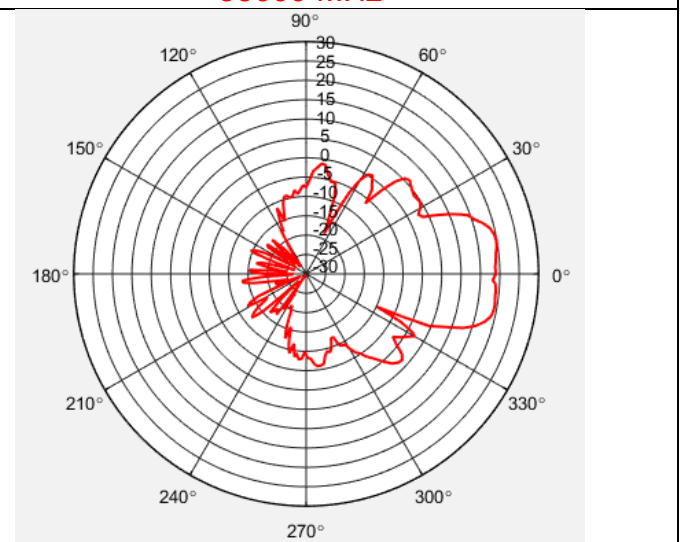
55000 MHz



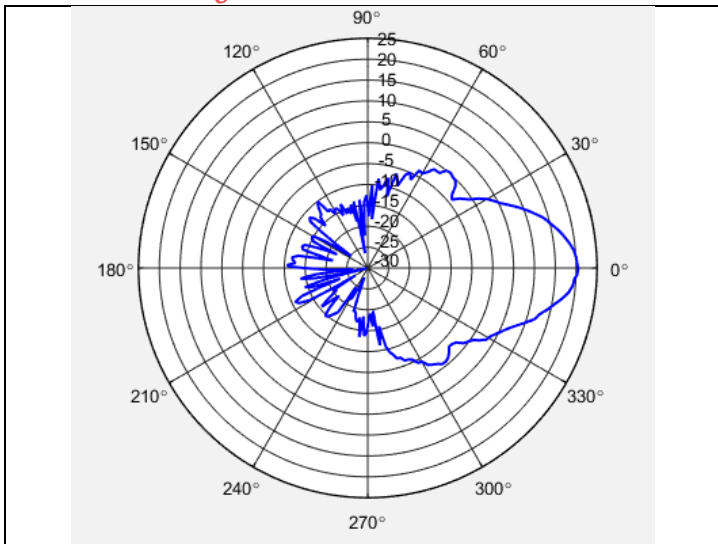
55000 MHz



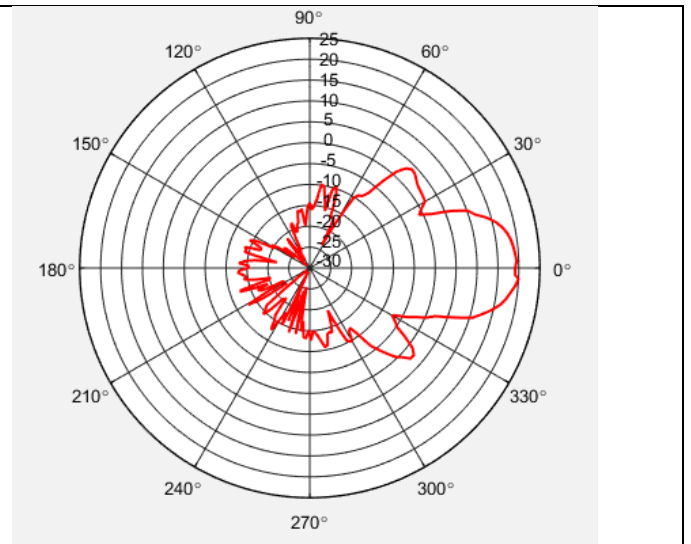
60000 MHz



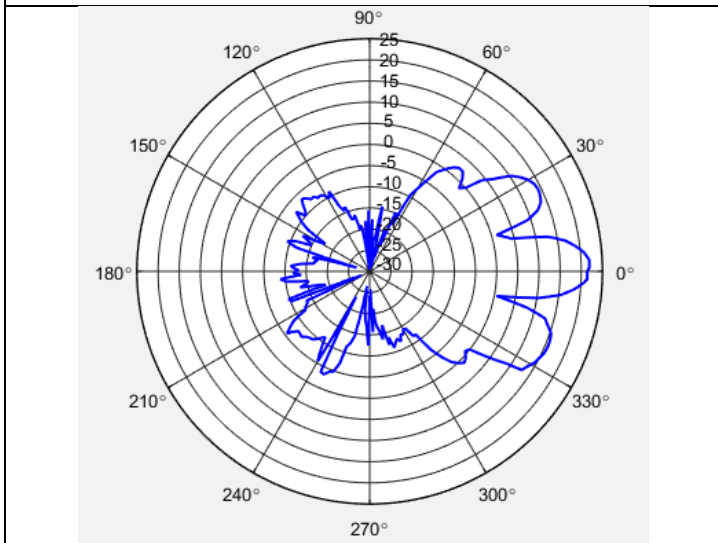
60000 MHz



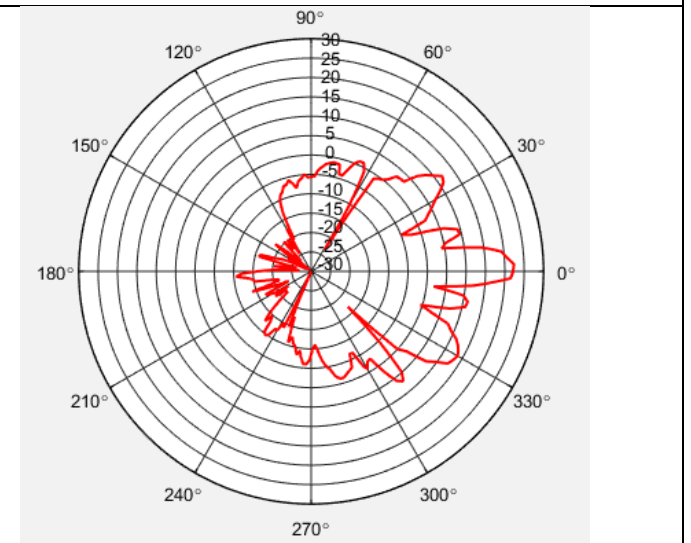
65000 MHz



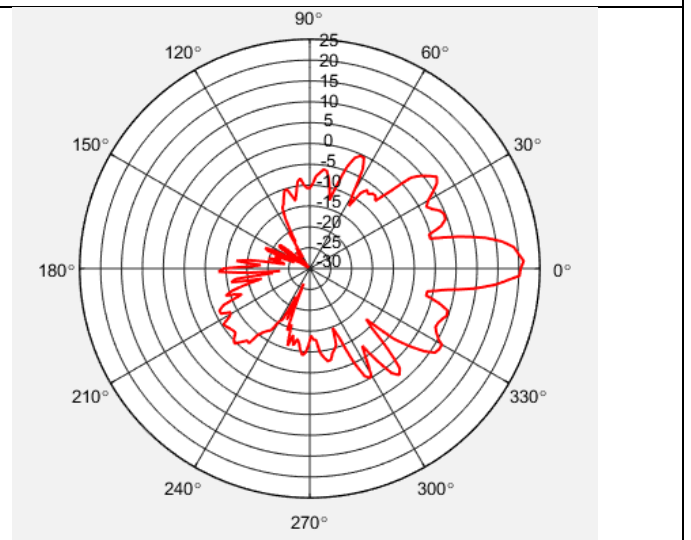
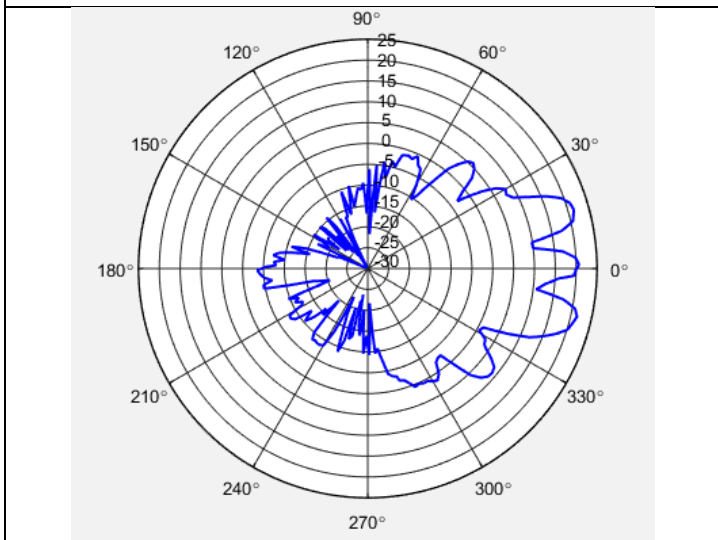
65000 MHz



70000 MHz



70000 MHz



Antenna gain

Freq(MHz)	H-plane Gain(1M)	V-plane Gain(1M)	H-plane Factor(1M)	V-plane Factor(1M)
5000	6.52	7.44	38.18	37.26
6000	6.87	7.85	38.66	37.68
7000	7.32	8.16	38.97	38.13
8000	7.54	7.83	39.44	39.15
9000	8	7.89	39.63	39.74
10000	8.32	8.31	39.90	39.91
11000	8.72	8.72	40.07	40.07
12000	9.02	9.18	40.29	40.13
13000	9.64	9.95	40.17	39.86
14000	9.92	9.92	40.36	40.36
15000	10.27	10.14	40.45	40.58
16000	10.74	10.57	40.41	40.58
17000	10.74	10.84	40.81	40.71
18000	10.7	10.78	41.24	41.16
19000	11.08	11.02	41.23	41.29
20000	11.5	11.42	41.16	41.24
21000	11.9	11.84	41.10	41.16
22000	12.11	11.79	41.22	41.54
23000	12.15	12.02	41.50	41.63
24000	11.99	11.93	41.96	42.02
25000	11.81	11.76	42.44	42.49
26000	11.33	11.36	43.20	43.17
27000	11.55	11.5	43.26	43.31
28000	11.59	11.7	43.48	43.37
29000	11.41	11.43	43.92	43.90
30000	10.63	10.82	44.95	44.76
31000	10.54	10.44	45.29	45.39
32000	10.85	10.93	45.22	45.14
33000	11.19	11.37	45.11	44.93
34000	11.41	11.62	45.11	44.90
35000	11.4	11.58	45.34	45.16
36000	11.56	11.64	45.40	45.32
37000	11.89	11.93	45.28	45.24
38000	12.21	12.2	45.16	45.17
39000	12.41	12.39	45.16	45.18
40000	12.54	12.65	45.23	45.12
41000	12.64	12.78	45.32	45.18
42000	12.79	12.72	45.35	45.42
43000	12.84	12.72	45.49	45.61
44000	13.18	12.94	45.33	45.57
45000	13.48	13.32	45.20	45.36
46000	13.92	13.6	44.93	45.25

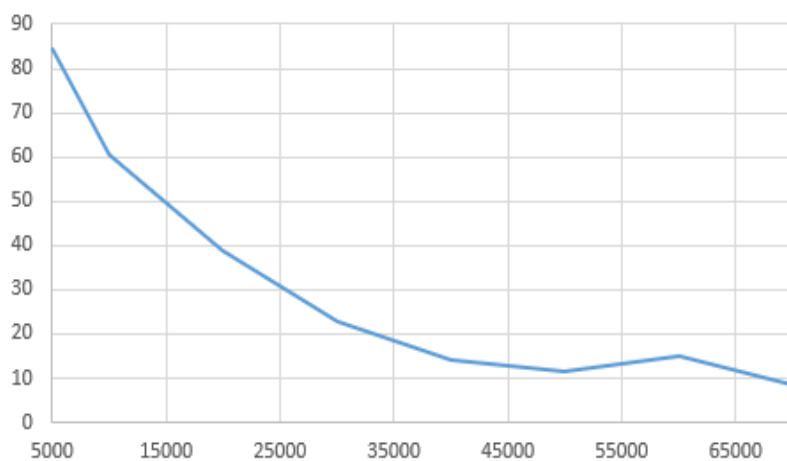
47000	14.45	14.08	44.57	44.94
48000	14.67	14.34	44.52	44.85
49000	14.58	14.51	44.77	44.84
50000	14.64	14.51	44.87	45.00
51000	14.67	14.69	45.00	44.98
52000	15.07	15.04	44.75	44.78
53000	15.8	15.53	44.17	44.44
54000	16.29	16.19	43.83	43.93
55000	16.59	16.33	43.68	43.94
56000	16.08	16.06	44.33	44.35
57000	15.6	15.33	44.95	45.22
58000	15.35	14.97	45.34	45.72
59000	15.25	15.03	45.58	45.80
60000	15.44	15.08	45.52	45.88
61000	15.7	15.25	45.39	45.84
62000	16.35	15.44	44.87	45.78
63000	16.95	15.74	44.40	45.61
64000	16.86	15.82	44.62	45.66
65000	16.87	15.56	44.73	46.04
66000	16.27	15.21	45.46	46.52
67000	16.23	15.17	45.62	46.68
68000	16.41	15.35	45.56	46.62
69000	16.35	15.51	45.74	46.58
70000	16.8	15.71	45.40	46.49
5000	16.15	15.7	46.17	46.62
6000	16.34	15.52	46.09	46.91
7000	16.15	15.51	46.39	47.03
8000	16.68	15.62	45.98	47.04
9000	16.9	15.4	45.86	47.36
10000	16.04	15.28	46.83	47.59
11000	15.59	14.69	47.39	48.29
12000	15.58	14.91	47.50	48.17
13000	15.45	14.95	47.74	48.24
14000	15.57	14.91	47.72	48.38
15000	15.05	14.46	48.34	48.93
16000	14.99	14.05	48.50	49.44
17000	14.8	14.15	48.79	49.44
18000	14.58	14.13	49.11	49.56
19000	14.41	14.34	49.38	49.45
20000	14.43	14.43	49.45	49.45
21000	14.56	14.68	49.42	49.30
22000	14.54	14.65	49.53	49.42
23000	15.2	14.99	48.97	49.18
24000	15.83	15.48	48.43	48.78
25000	16.27	15.72	48.08	48.63
26000	15.72	15.28	48.72	49.16
27000	14.92	14.82	49.61	49.71

28000	14.99	15.06	49.63	49.56
29000	15.61	15.53	49.09	49.17
30000	16.14	15.76	48.65	49.03
31000	17.1	16.86	47.77	48.01
32000	18.33	17.79	46.63	47.17
33000	18.5	18.61	46.54	46.43
34000	18.79	18.89	46.34	46.24
35000	18.97	19.13	46.24	46.08
36000	18.64	18.66	46.65	46.63
37000	17.88	17.59	47.49	47.78
38000	17.94	18.01	47.51	47.44
39000	18.96	18.33	46.57	47.20
40000	19.23	18.87	46.38	46.74
41000	18.79	17.52	46.90	48.17
42000	18.53	18	47.23	47.76
43000	19.11	18.42	46.73	47.42
44000	18.64	18.64	47.28	47.28
45000	19.01	19.82	46.98	46.17
46000	19.73	20.34	46.34	45.73
47000	20.08	20.75	46.06	45.39
48000	20.85	20.45	45.36	45.76
49000	20.85	20.54	45.44	45.75
50000	21.35	20.58	45.01	45.78
51000	21.78	20.73	44.65	45.70
52000	21.7	20.58	44.80	45.92
53000	21.28	20.67	45.29	45.90
54000	20.83	20.99	45.81	45.65
55000	21.19	21.41	45.52	45.30
56000	21.39	21.57	45.39	45.21
57000	22.33	21.49	44.52	45.36
58000	22.4	21.71	44.51	45.20
59000	22.39	21.95	44.59	45.03
60000	22.38	21.98	44.67	45.07
61000	22.21	21.81	44.90	45.30
62000	21.9	21.93	45.28	45.25
63000	21.15	22.09	46.09	45.15
64000	20.93	21.72	46.38	45.59
65000	21.62	21.55	45.75	45.82
66000	22.33	21.69	45.11	45.75
67000	22.15	21.52	45.35	45.98
68000	21.04	21.3	46.52	46.26
69000	21.71	21.4	45.92	46.23
70000	6.52	7.44	38.18	37.26

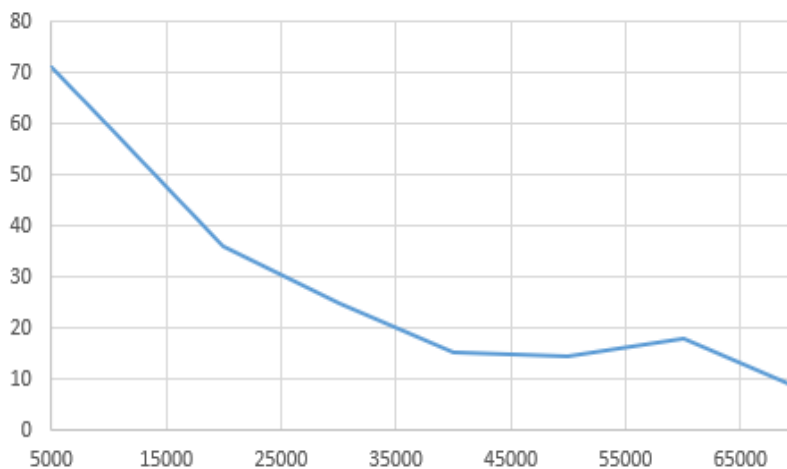
Antenna -3db Beamwidth

Freq(MHz)	H-plane	V-plane
5000	84.3	71.1
10000	60.6	59.6
20000	38.7	36
30000	22.9	24.7
40000	14.1	15.1
50000	11.6	14.5
60000	14.9	17.9
70000	8.5	8.5
AVG	31.95	30.92

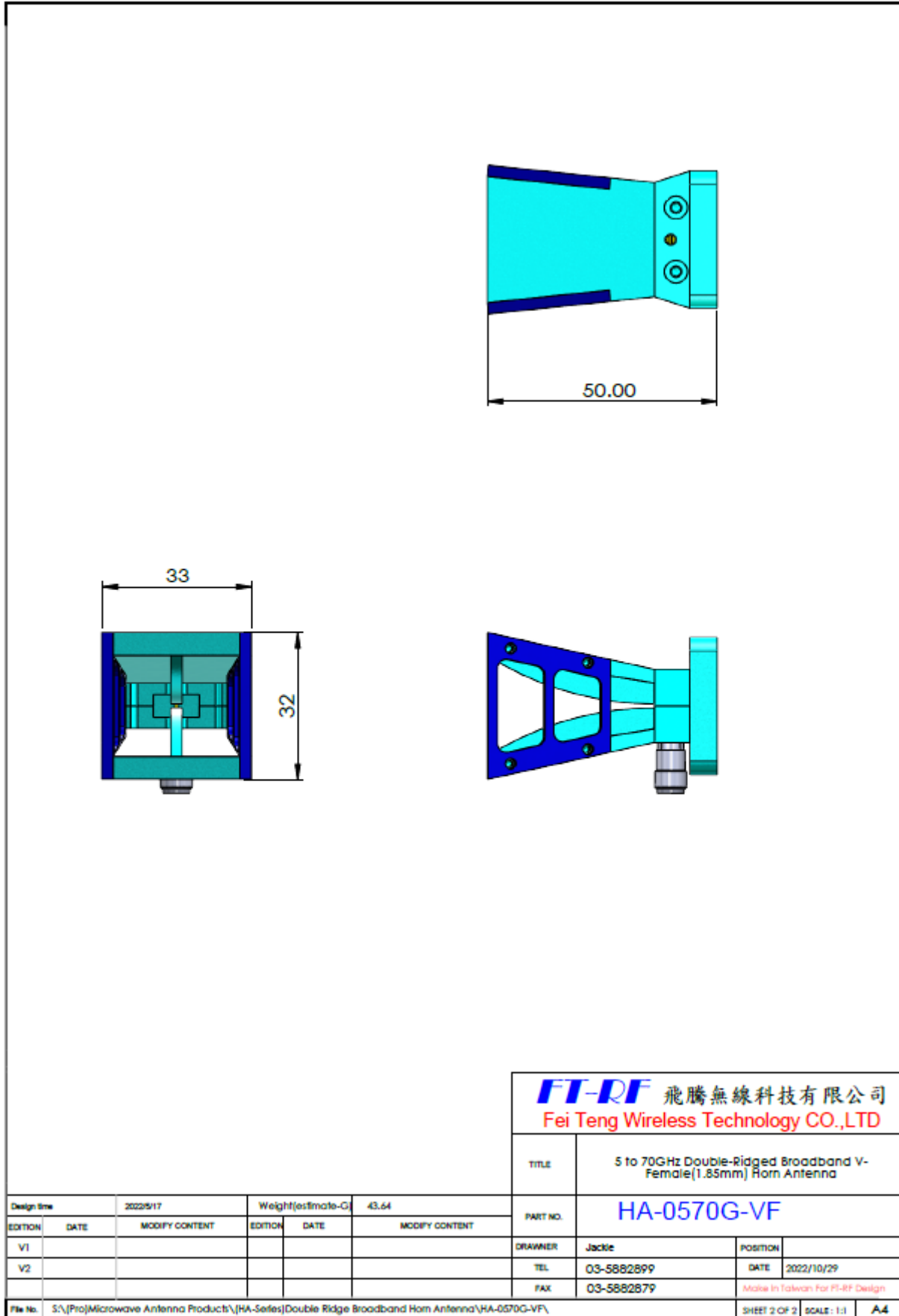
H-plane



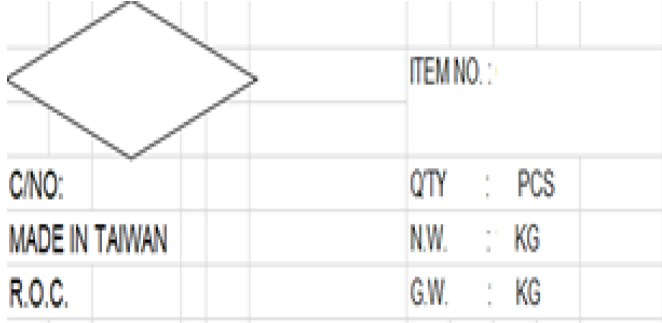
V-plane



Antenna Dimension



Packing List and Label

FT-RF's P/N: HA-0570G-VF	Customer's P/N: Please inform us when you make an order	
	1 Carton quantity	1 pcs
	Antenna accessories	
	Carton dimension (LxWxH)	
	Antenna weight (N.W)	
	Carton Weight (G.W)	
Carton Label (100x150mm)	Antenna Label (10x30mm)	
	HA-0570G-VF	
Custom carton Label	Custom Antenna Label	
** Following the customer requirements. Please inform us when you make an order	** Following the customer requirements. Please inform us when you make an order	

RoHs and WEEE Status (RoHs and WEEE Compliance)

Certificate of Compliance

Date:

To Whom It May Concerns:

FT-RF hereby certifies that product

Model	Product
HA-0570G-VF	5 GHz to 70 GHz Double Ridged Broadband Waveguide Horn Antenna, V-Female Connector (1.85mm)

Is in conformance with the requirements of the European RoHS Directive 2011/65/EU and the European WEEE Directive 2012/19/EU, all materials referenced therein are in concentrations below the maximum allowable levels specified. Products manufactured by FT-RF bear the CE marking and have FCC certificate. FT-RF has been assessed and found to be in accordance with the requirements of ISO 14001:2015 and ISO 9001:2015 standards, scope of Design and Manufacture of Antenna.

Our statements in this letter regarding RoHS and WEEE compliance do not extend to, or apply to any product subjected to unintended contamination, misuse, neglect, accident, improper installation, or to use in violation of instructions furnished by FT-RF.

Sincerely,

FT-RF (Fei Teng Wireless Technology CO., LTD)

The information contained in this letter is being provided for informational purposes only and to clarify certain information concerning FT-RF products. Nothing provided in this letter is

- (1) a representation, warranty, or agreement to indemnification by FT-RF.
- (2) a statement which may form the basis of reliance by FT-RF,
- (3) a modification of any of the terms and conditions of sale agreed to in writing between FT-RF and its customers with respect to any FT-RF products, whether previously sold or to be sold in the future.